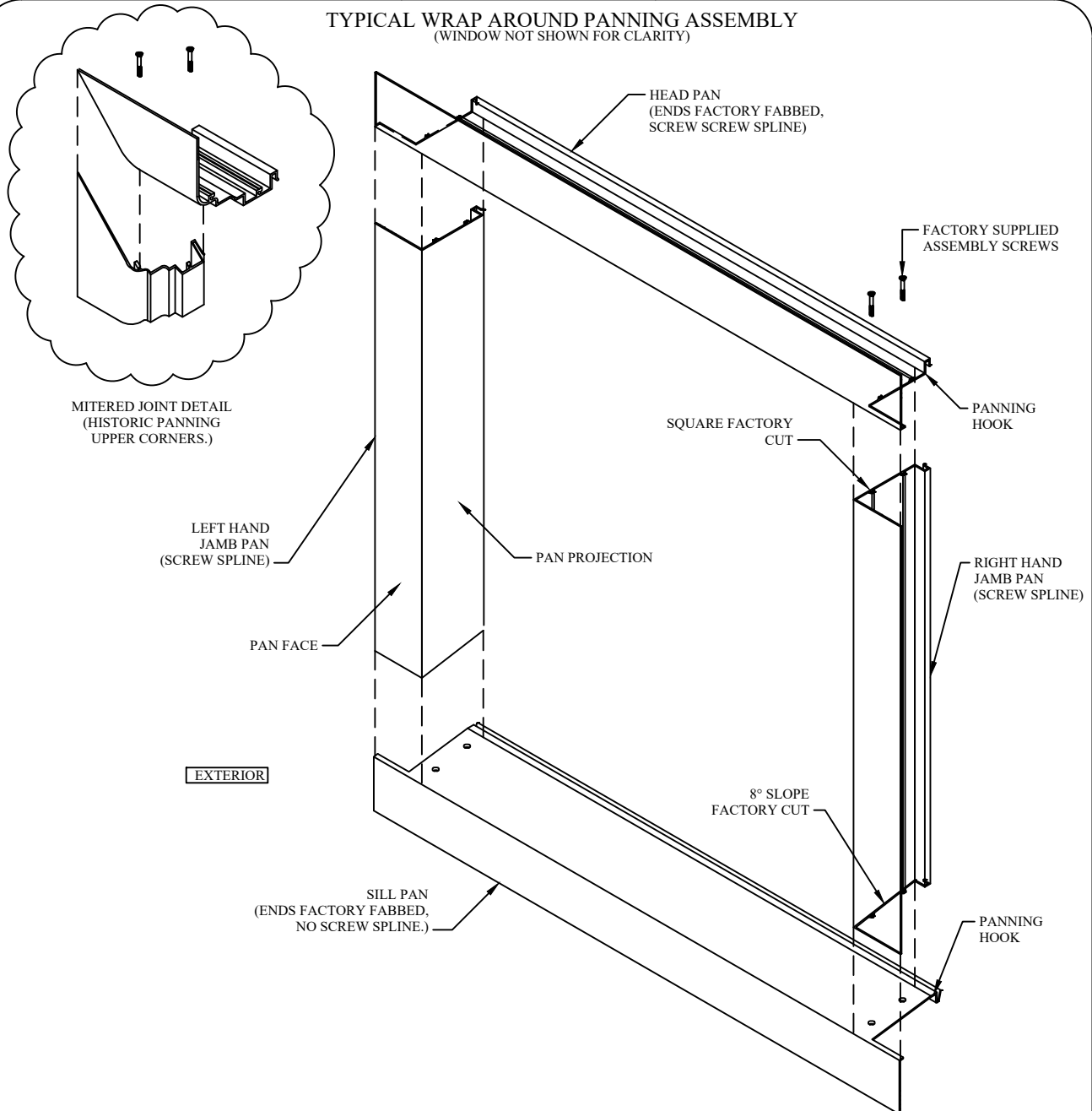
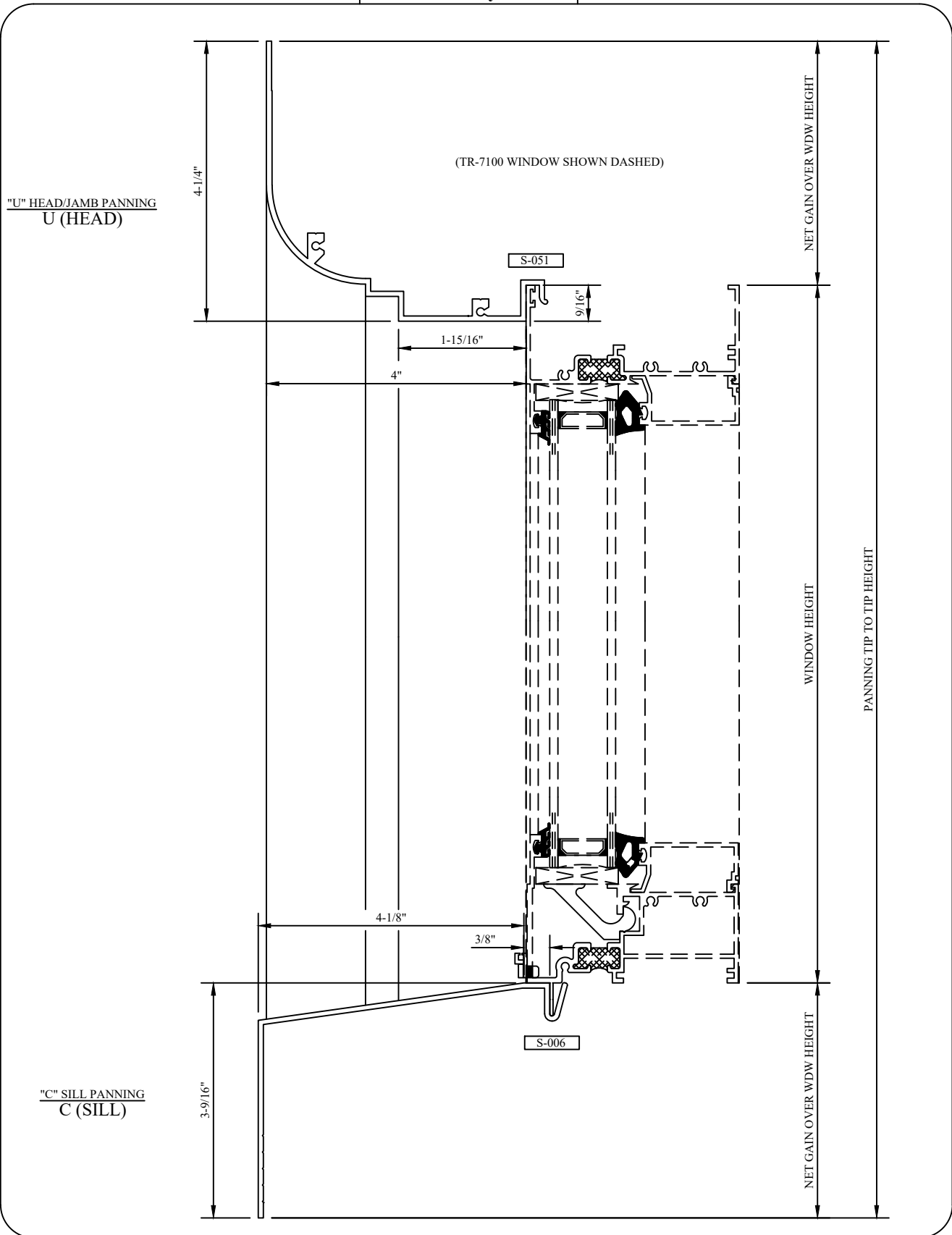


Assembly 1 of 3

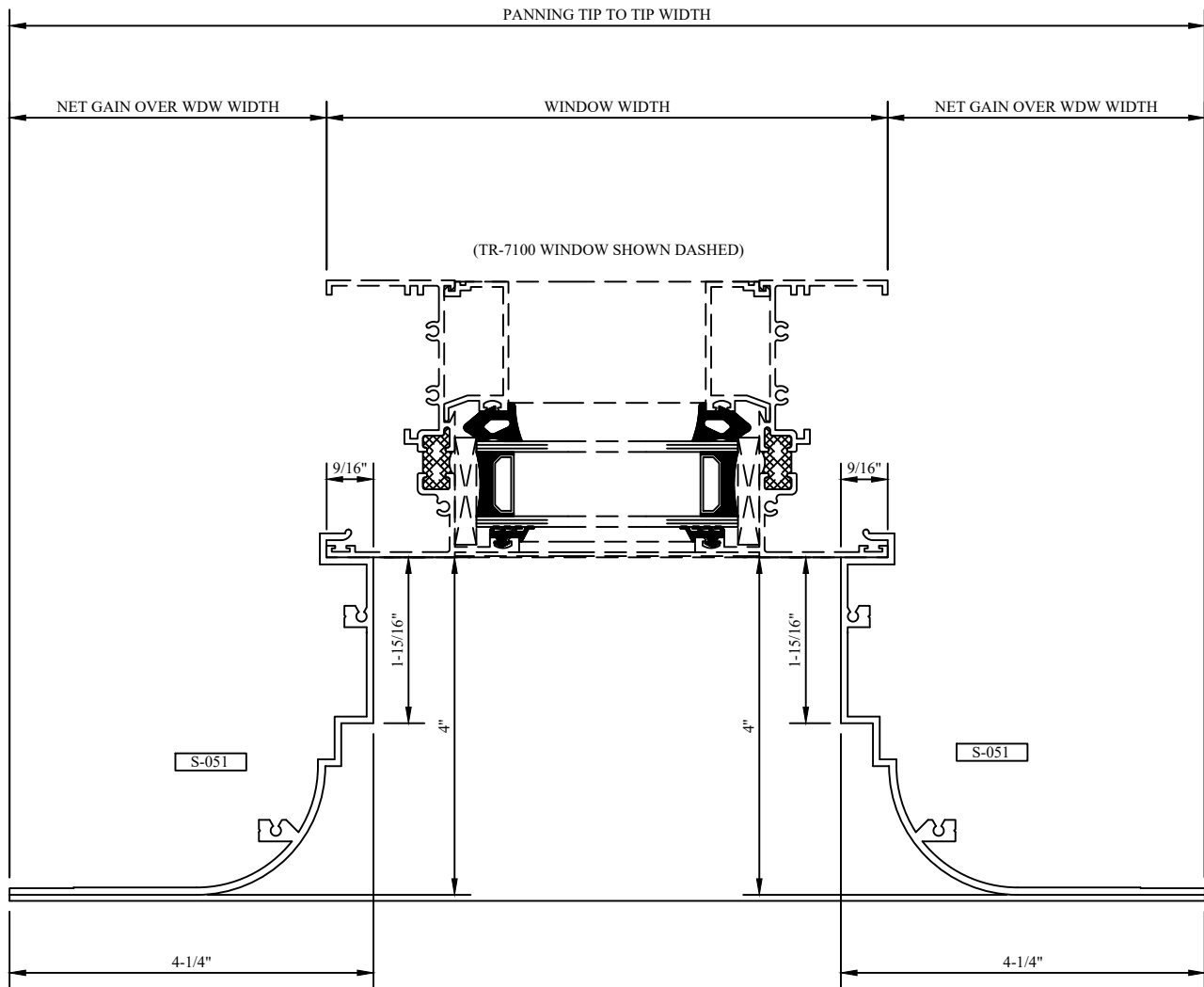
TYPICAL WRAP AROUND PANNING ASSEMBLY
(WINDOW NOT SHOWN FOR CLARITY)

ASSEMBLY PROCEDURE:

1. REMOVE SASH FROM WINDOW AND LAY WINDOW FRAME DOWN ON PADDED SURFACE WITH EXTERIOR FACE UP.
2. TRIM WINDOW JAMB BULB WEATHERSTRIP TO EXACT JAMB LENGTH.
3. JAMB PANS: APPLY SEALANT IN PANNING HOOK AND APPLY TO FRAME JAMBS WITH LOWER ENDS EVEN WITH LOWER END OF FRAME JAMBS.
4. HEAD PAN: APPLY SEALANT IN PANNING HOOK, SLIDE OVER FRAME HEAD AND SCREW PAN CORNERS TOGETHER.
5. SILL PAN APPLY SEALANT IN PANNING HOOK, SLIDE OVER FRAME SILL AND SCREW PAN CORNERS TOGETHER.
6. APPLY SCREWS THRU PANNING HOOK AND WINDOW FRAME TO SECURE PAN TO WINDOW. (MINIMUM ONE PER SIDE)
7. BACKSEAL ALL FOUR ASSEMBLED PAN CORNERS.

Assembly 2 of 3



Assembly 3 of 3



"U" HEAD/JAMB PANNING
U (JAMB)

"U" HEAD/JAMB PANNING
U (JAMB)

HD/JM Panning Index

HEAD/JAMB PANNING	DIE #	PAGE
A3	S-2884	15
A4	S-2915	16
A5	S-2953	13
A6	S-3045	16
AA	S-421	12
AR	S-1911	14
B	S-001	11
BB	S-449	15
BN	S-949	12
C	S-005	16
CC	S-447	12
CM	S-023	16
CR	S-011	17
CV	S-782	11
D	S-003	14
DC	S-2085	14
DD	S-435	13
DM	S-042	14
E	S-040	11
E1	S-2257	11
E2	S-2277	12
EB	S-1991	11
EC	S-2048	13
EM	S-563	11
FE	S-1497	19
F	S-4453	19
HH	S-986	15
HT	S-281	11
IR	S-1355	12
JJ	S-1229	12
JR	S-076	13
LL	S-1262	12
LL	S-084	13
M2	S-1924	17
MB	S-2469	17
MC	S-2455	17
M	S-095	17
MR	S-478	17
N	S-1635	12
NF	S-3445	11

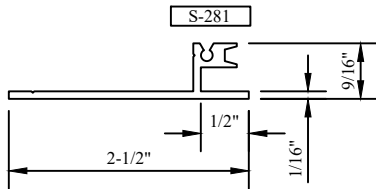
HEAD/JAMB PANNING	DIE #	PAGE
NN	S-1381	18
O	S-249	13
P	S-2038	15
P1	S-2238	14
PP	S-1391	12
PR	S-099	13
R	S-007	15
SR	S-1353	16
SS	S-1454	15
T	S-258	13
TM	S-975	14
TT	S-1551	12
U	S-051	18
VR	S-1608	12
V	S-263	14
W	S-265	14
WW	S-1630	14
Y	S-580	13
Z	S-246	16
SPECIAL SHAPES		25

Sill Panning Index

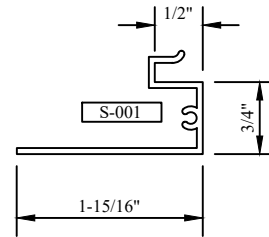
SILL PANNING	DIE #	PAGE
AR	S-1910	23
AR	S-951	23
B	S-002	20
B2	S-2278	21
C	S-006	24
CC	S-476	21
CR	S-012	24
D	S-004	21
DM	S-1446	22
E	S-041	20
EB	S-1992	20
EC	S-2049	21
EE	S-448	21
EM	S-564	20
FF	S-450	25
GG	S-987	21
HH	S-1930	22
HT	H-282	20
IR	S-1356	21
K	S-1656	20
KK	S-1230	20
L	S-260	21
M2	S-1925	24
M3	S-1960	22
MR	S-479	24
NF	H-3446	20
NR	S-092	25
P	S-2039	22
PP	S-1657	22
R	S-008	25
SR	S-1354	23
T	S-259	22
W	S-264	23
Z	S-247	23

Half Scale Sections

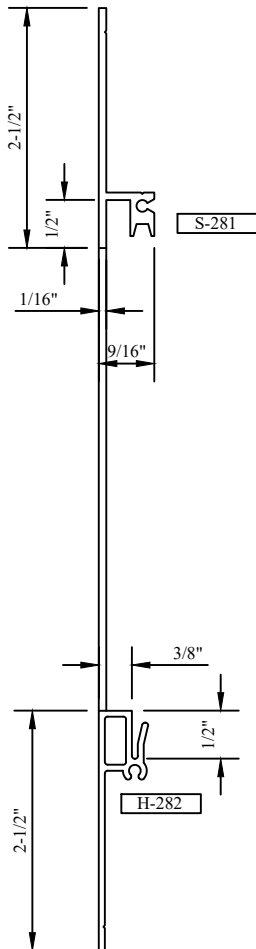
"HT" HEAD/JAMB PANNING
HT (JAMB)



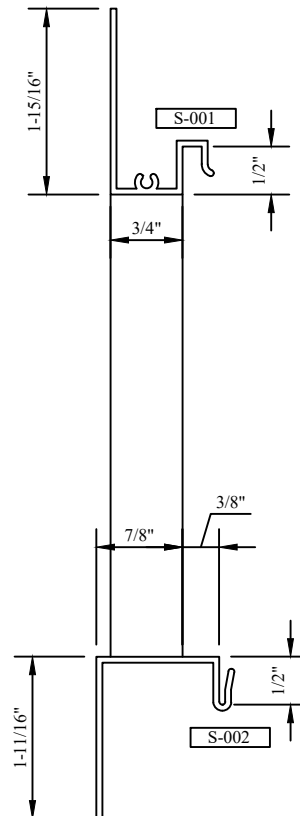
"B" HEAD/JAMB PANNING
B (JAMB)



"HT" HEAD/JAMB PANNING
HT (HEAD)



"B" HEAD/JAMB PANNING
B (HEAD)

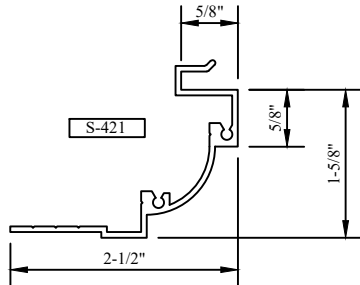


"HT" SILL PANNING
HT (SILL)

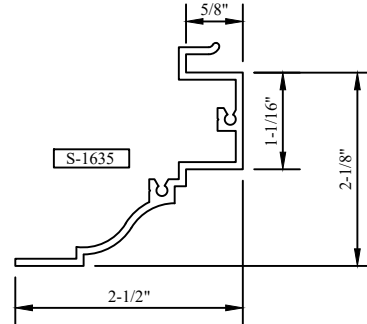
"B" SILL PANNING
B (SILL)

Half Scale Sections

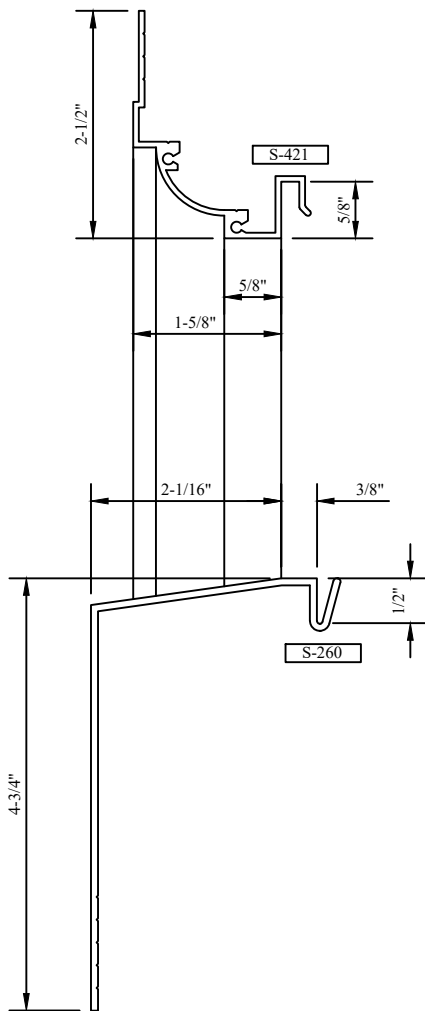
"AA" HEAD/JAMB PANNING
AA (JAMB)



"N" HEAD/JAMB PANNING
N (JAMB)

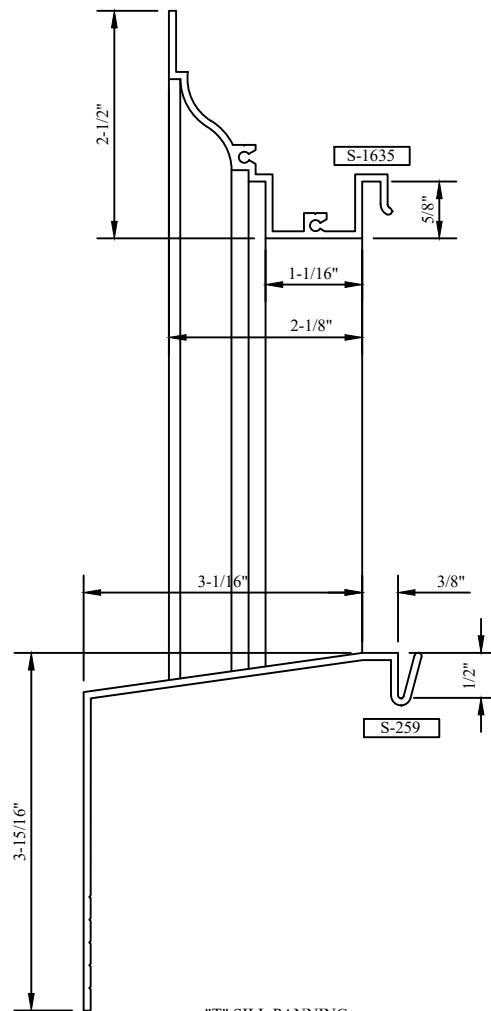


"AA" HEAD/JAMB PANNING
AA (HEAD)



"L" SILL PANNING
L (SILL)

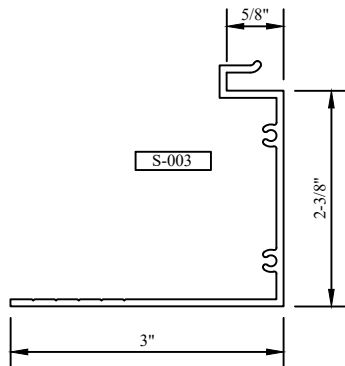
"N" HEAD/JAMB PANNING
N (HEAD)



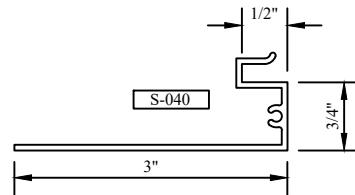
"T" SILL PANNING
T (SILL)

Half Scale Sections

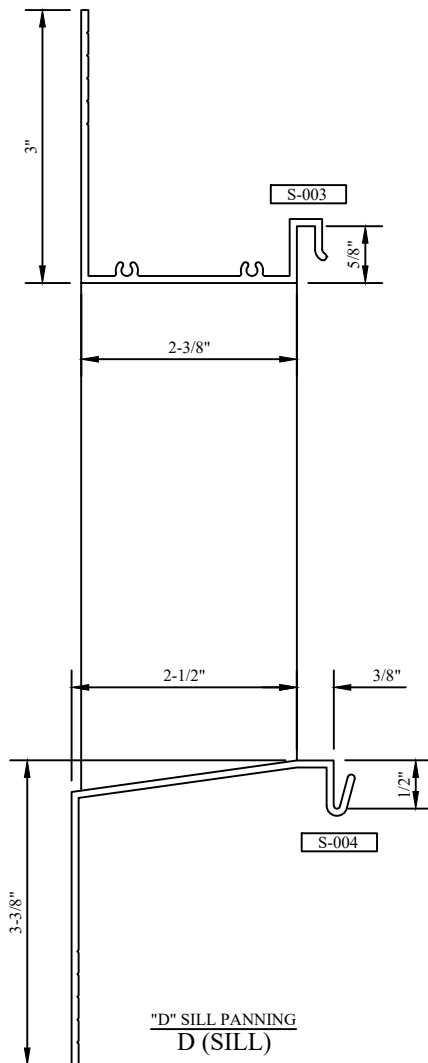
"D" HEAD/JAMB PANNING
D (JAMB)



"E" HEAD/JAMB PANNING
E (JAMB)

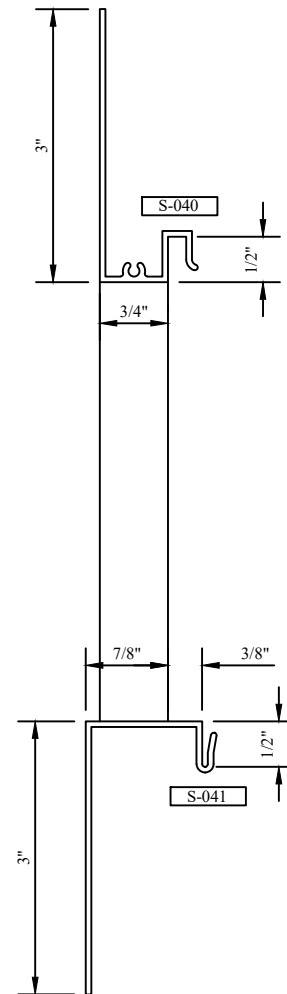


"D" HEAD/JAMB PANNING
D (HEAD)



"D" SILL PANNING
D (SILL)

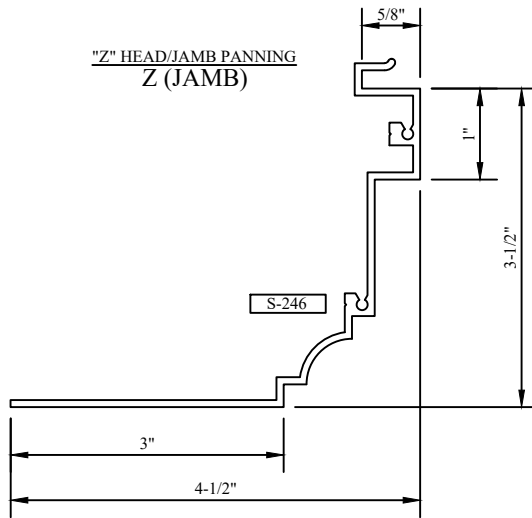
"E" HEAD/JAMB PANNING
E (HEAD)



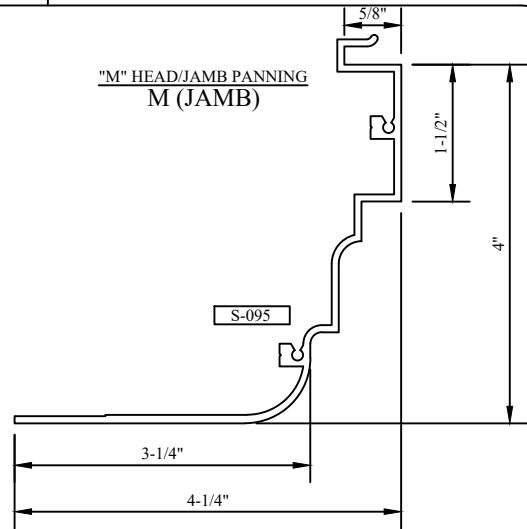
"E" SILL PANNING
E PANNING

Half Scale Sections

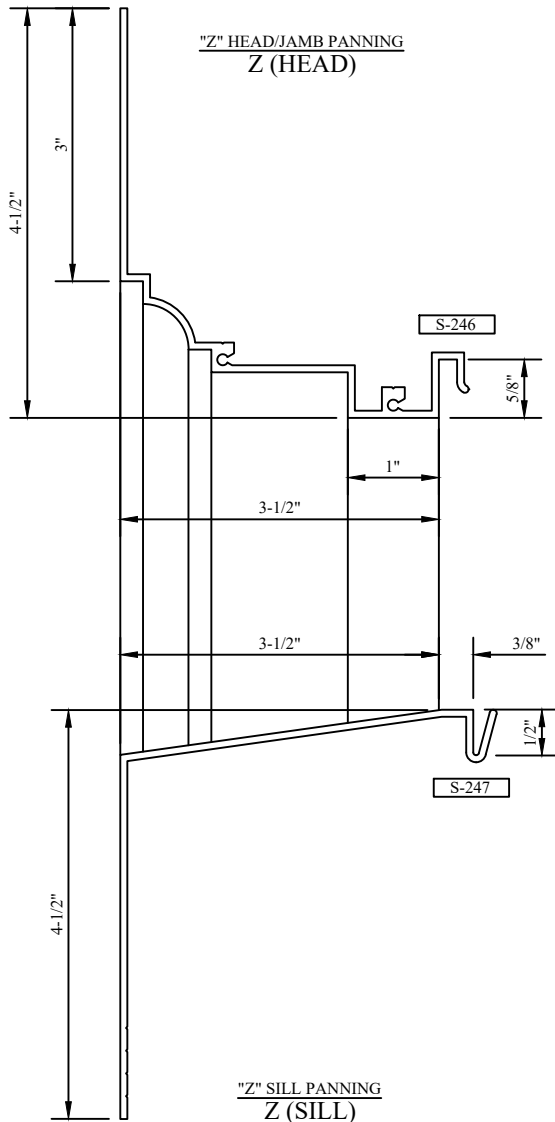
"Z" HEAD/JAMB PANNING
Z (JAMB)



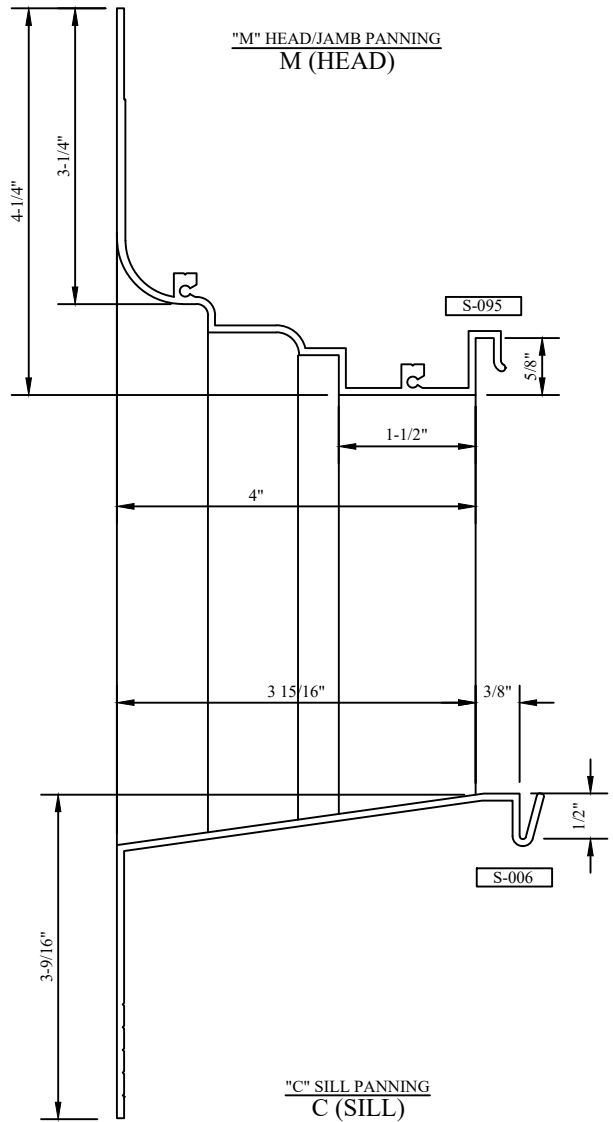
"M" HEAD/JAMB PANNING
M (JAMB)



"Z" HEAD/JAMB PANNING
Z (HEAD)



"M" HEAD/JAMB PANNING
M (HEAD)

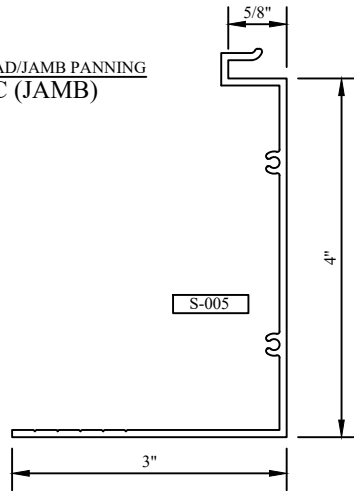


"Z" SILL PANNING
Z (SILL)

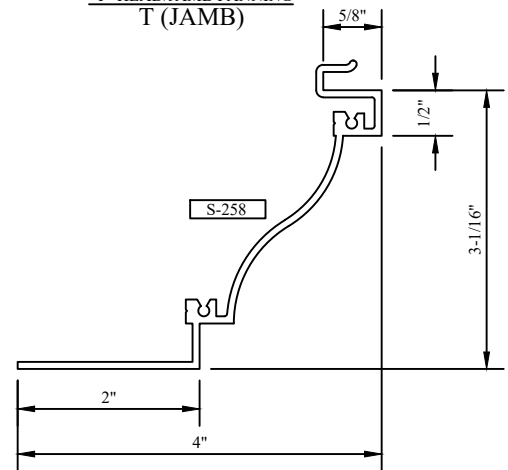
"C" SILL PANNING
C (SILL)

Half Scale Sections

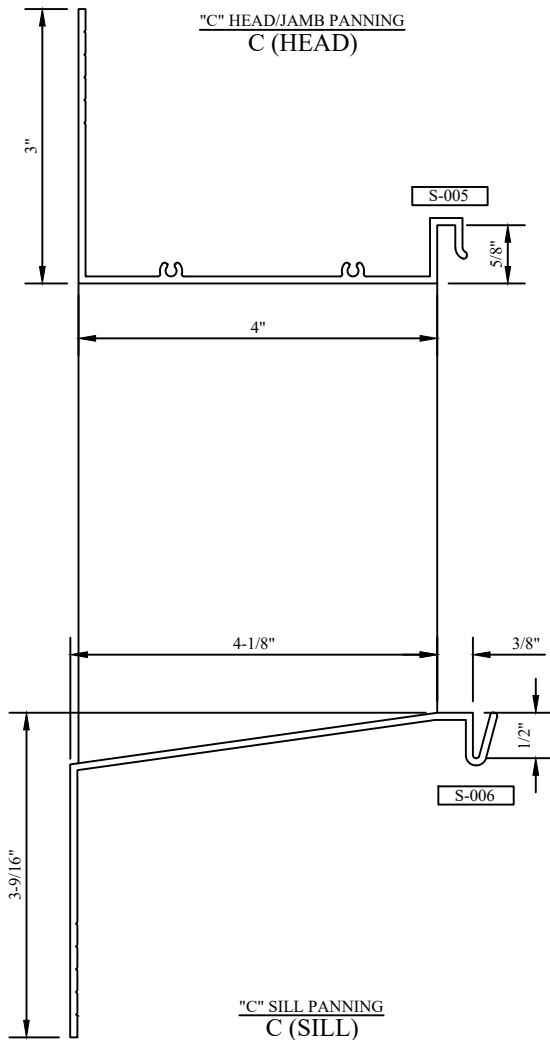
"C" HEAD/JAMB PANNING
C (JAMB)



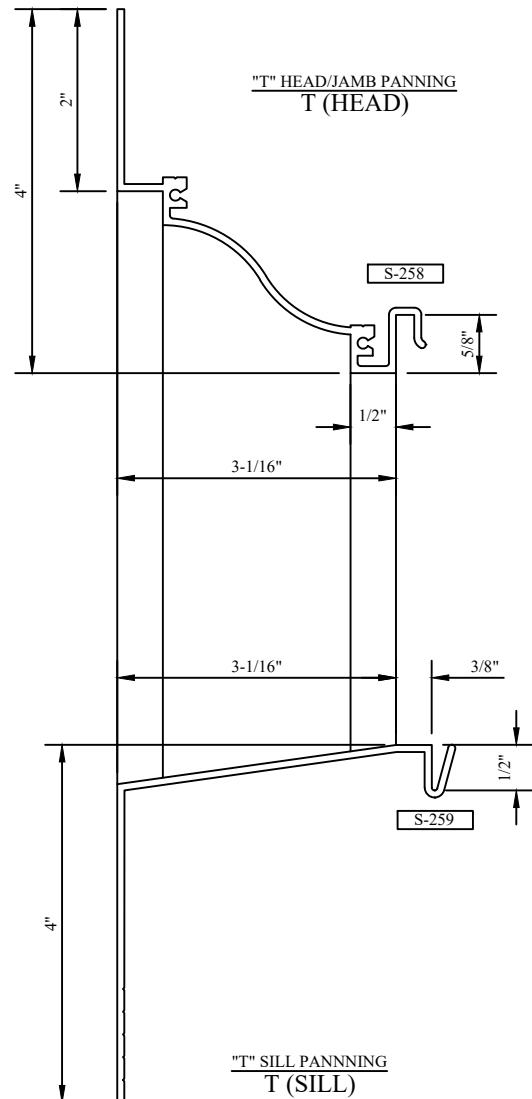
"T" HEAD/JAMB PANNING
T (JAMB)



"C" HEAD/JAMB PANNING
C (HEAD)



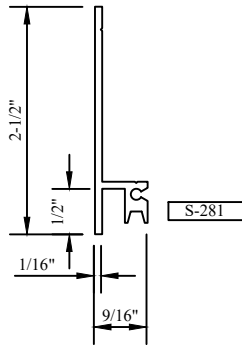
"T" HEAD/JAMB PANNING
T (HEAD)



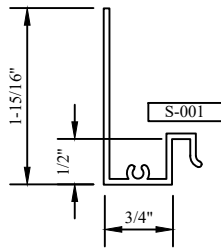
"C" SILL PANNING
C (SILL)

"T" SILL PANNING
T (SILL)

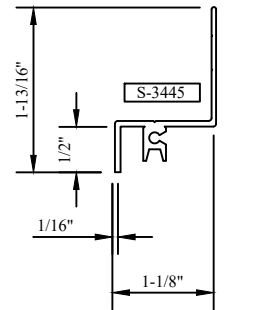
Half Scale Sections



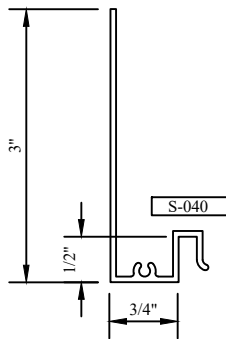
"HT" HEAD/JAMB PANNING
HT



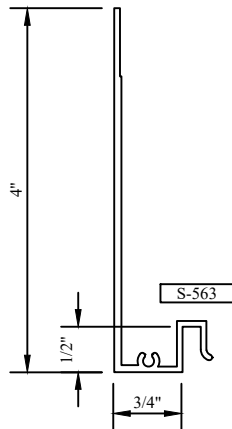
"B" HEAD/JAMB PANNING
B



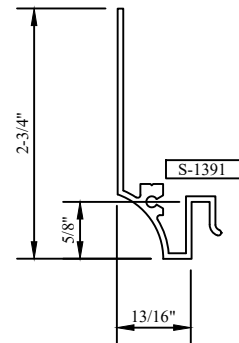
"NF" HEAD/JAMB PANNING
NF



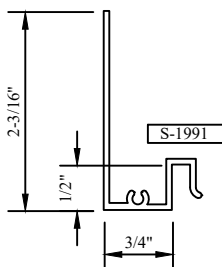
"E" HEAD/JAMB PANNING
E



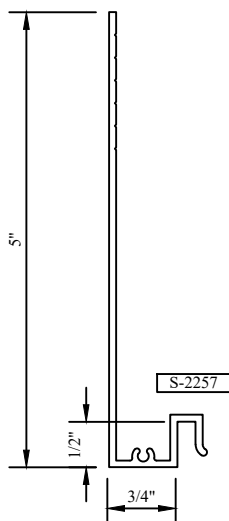
"E" MODIFIED HEAD/JAMB PANNING
EM



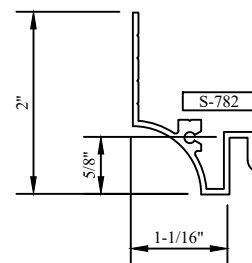
"PP" HEAD/JAMB PANNING
PP



"EB" HEAD/JAMB PANNING
EB

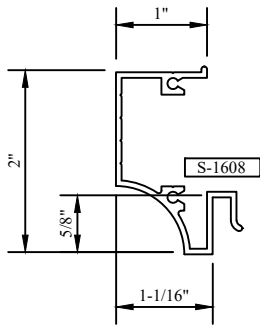


"E1" HEAD/JAMB PANNING
E1

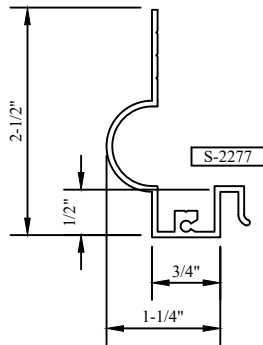


"CV" HEAD/JAMB PANNING
CV

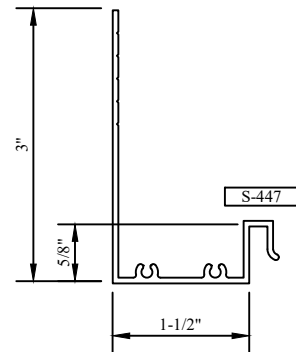
Half Scale Sections



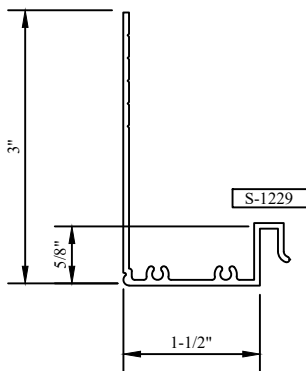
"V" RETURN HEAD/JAMB PANNING
VR



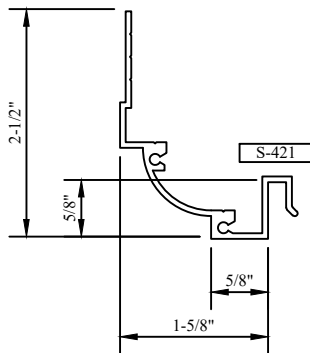
"E2" HEAD/JAMB PANNING
E2



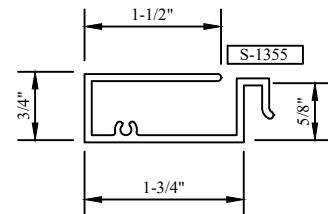
"CC" HEAD/JAMB PANNING
CC



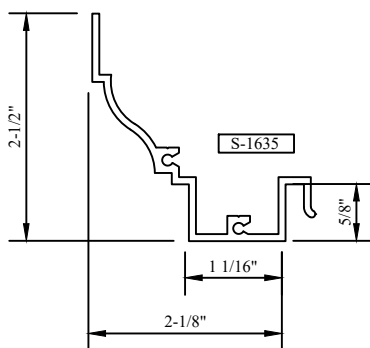
"JJ" HEAD/JAMB PANNING
JJ



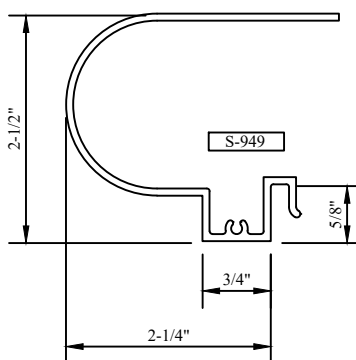
"AA" HEAD/JAMB PANNING
AA



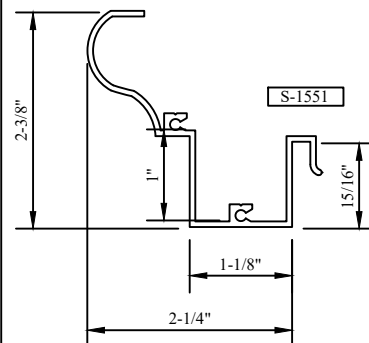
"IR" HEAD/JAMB PANNING
IR



"N" HEAD/JAMB PANNING
N

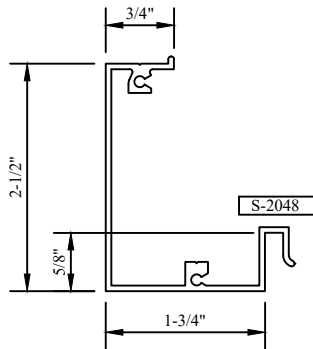


"BN" HEAD PANNING
BN

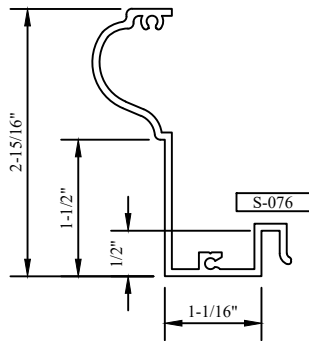


"TT" HEAD/JAMB PANNING
TT

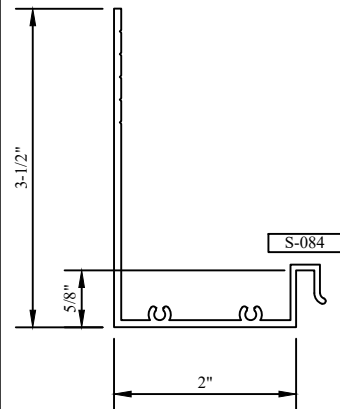
Half Scale Sections



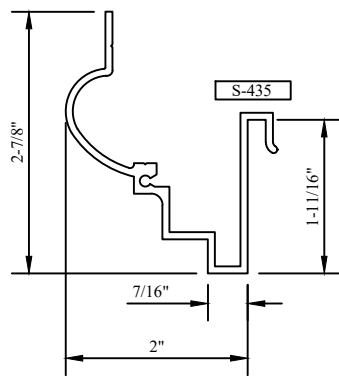
"EC" HEAD/JAMB PANNING
EC



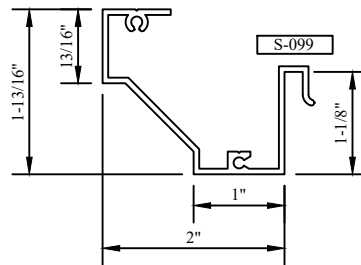
"J" RETURN HEAD/JAMB PANNING
JR



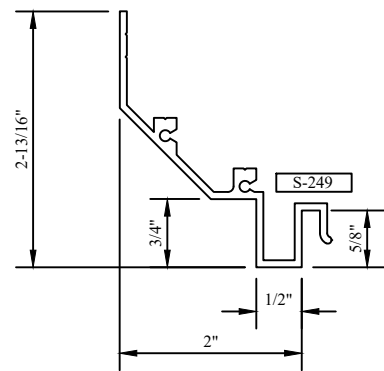
"L" HEAD/JAMB PANNING
L



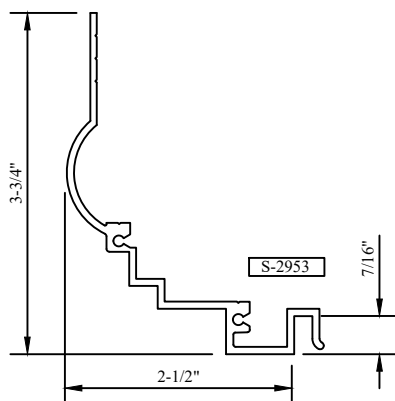
"DD" HEAD/JAMB PANNING
DD



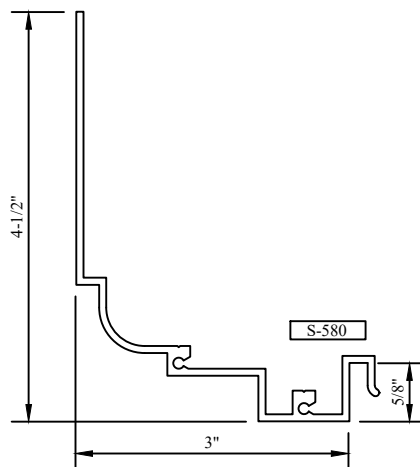
"P" RETURN HEAD/JAMB PANNING
PR



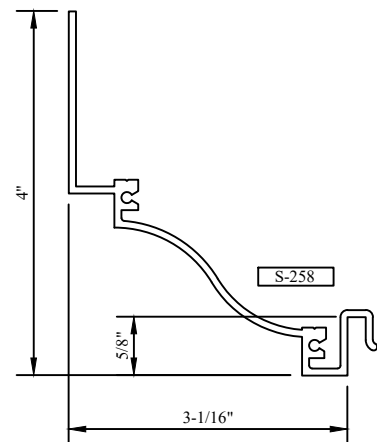
"O" HEAD/JAMB PANNING
O



"A5" HEAD/JAMB PANNING
A5

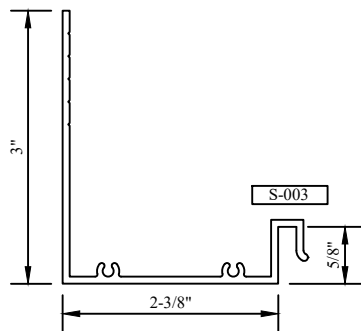


"Y" HEAD/JAMB PANNING
Y

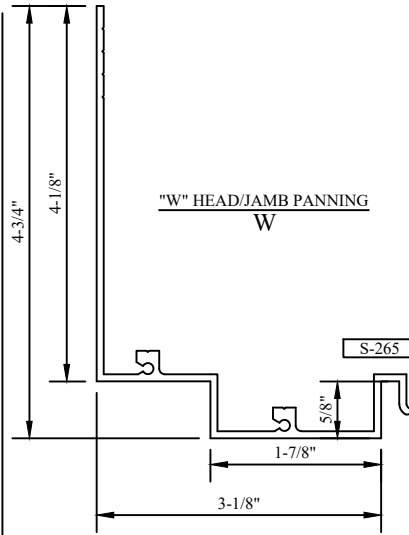


"T" HEAD/JAMB PANNING
T

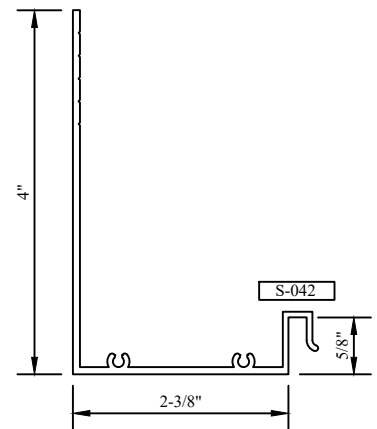
Half Scale Sections



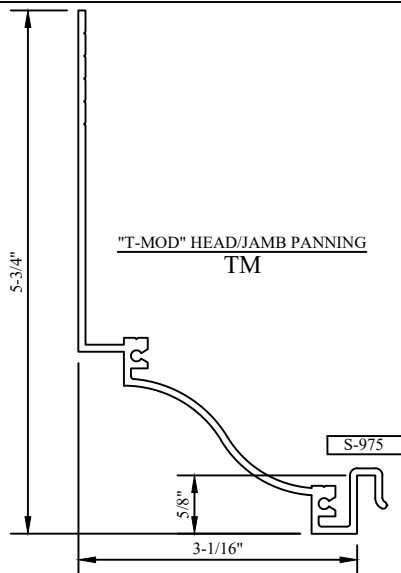
"D" HEAD/JAMB PANNING
D



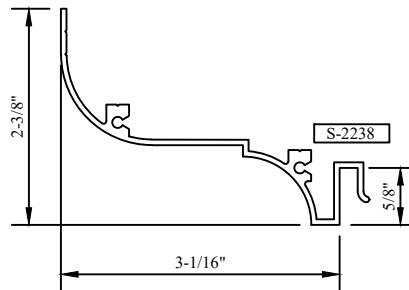
"W" HEAD/JAMB PANNING
W



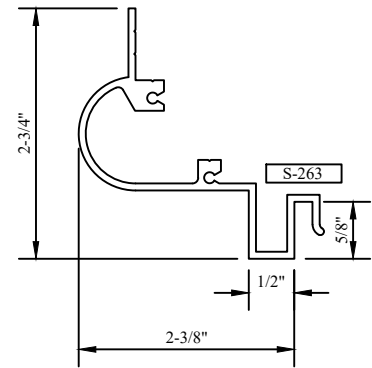
"D-MOD" HEAD/JAMB PANNING
DM



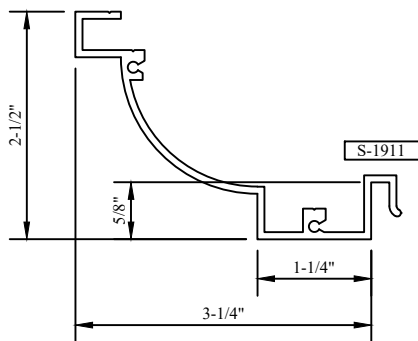
"T-MOD" HEAD/JAMB PANNING
TM



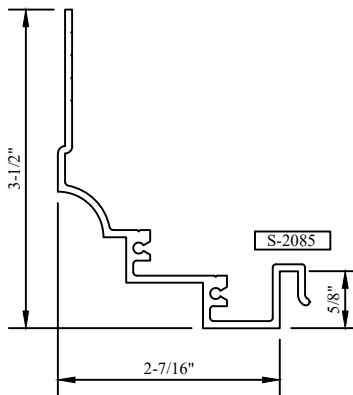
"P1" HEAD/JAMB PANNING
P1



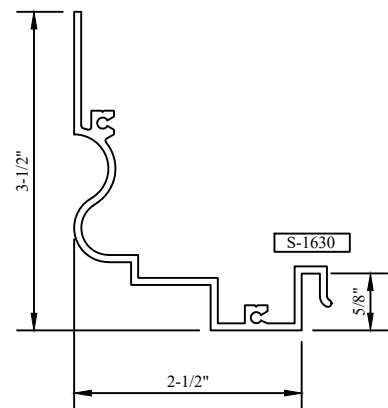
"V" HEAD/JAMB PANNING
V



"AR" HEAD/JAMB PANNING
AR

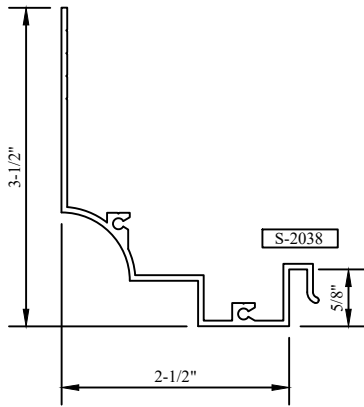


"DC" HEAD/JAMB PANNING
DC

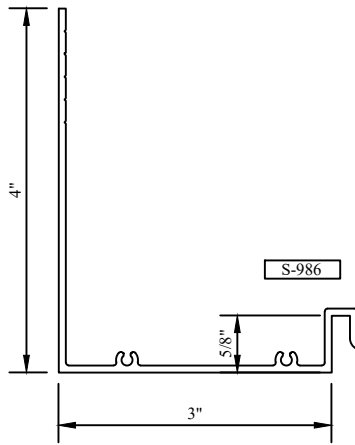


"WW" HEAD/JAMB PANNING
WW

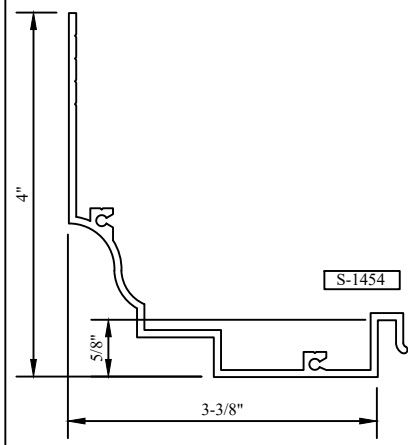
Half Scale Sections



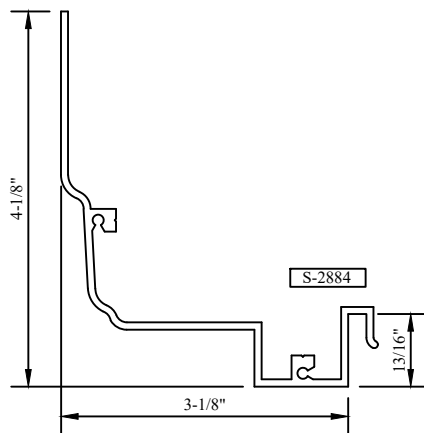
"P" HEAD/JAMB PANNING
P



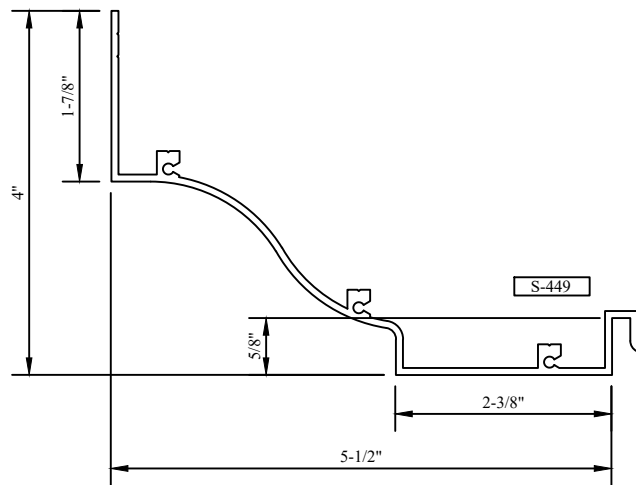
"HH" HEAD/JAMB PANNING
HH



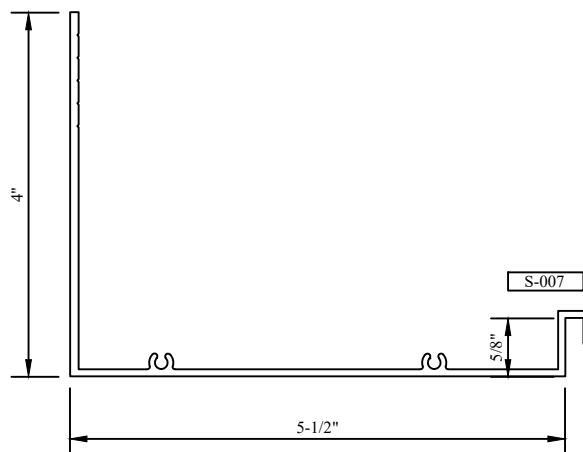
"SS" HEAD/JAMB PANNING
SS



"A3" HEAD/JAMB PANNING
A3

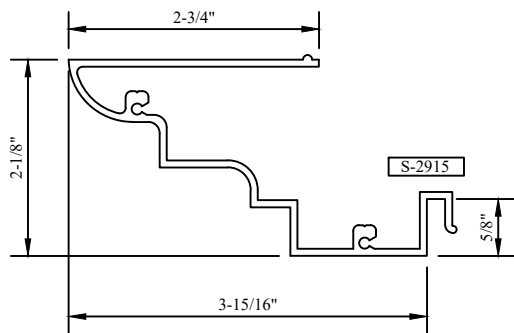


"BB" HEAD/JAMB PANNING
BB

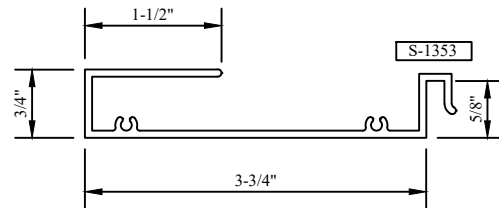


"R" HEAD/JAMB PANNING
R

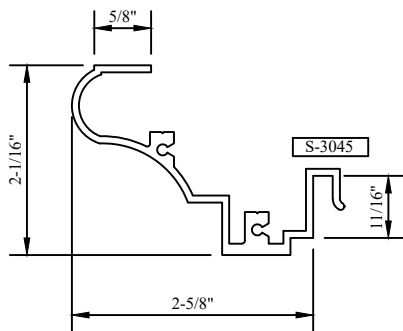
Half Scale Sections



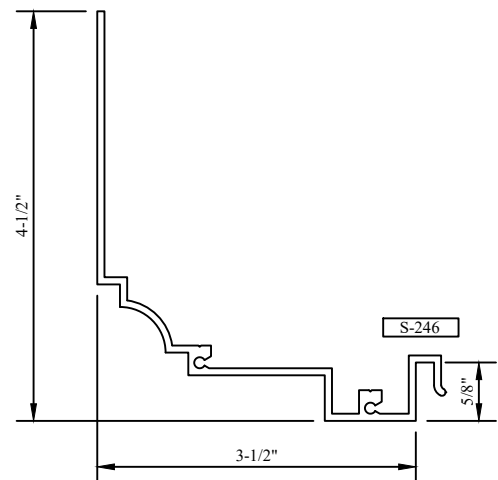
"A4" HEAD/JAMB PANNING
A4



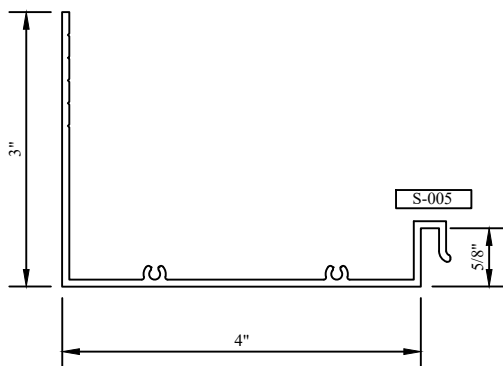
"SR" HEAD/JAMB PANNING
SR



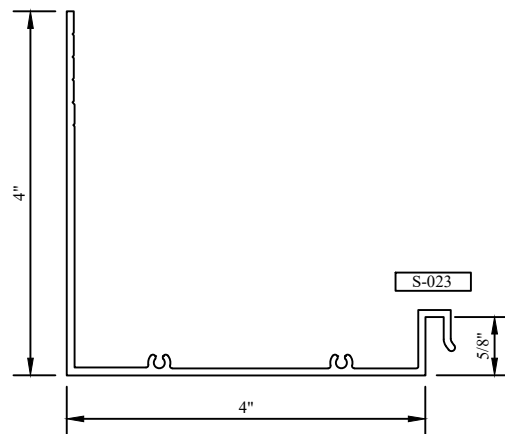
"A6" HEAD/JAMB PANNING
A6



"Z" HEAD/JAMB PANNING
Z

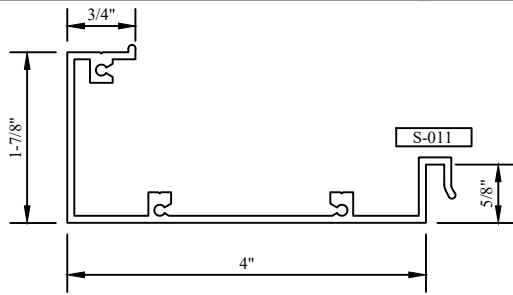


"C" HEAD/JAMB PANNING
C

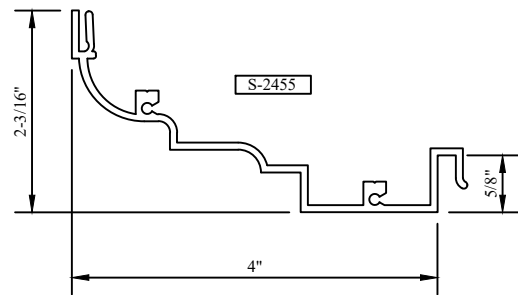


"C" MODIFIED HEAD/JAMB PANNING
CM

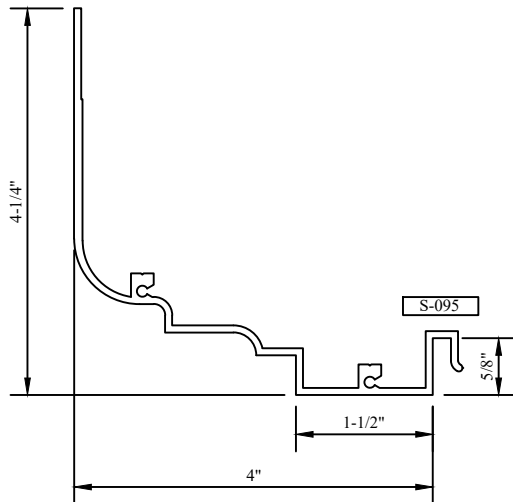
Half Scale Sections



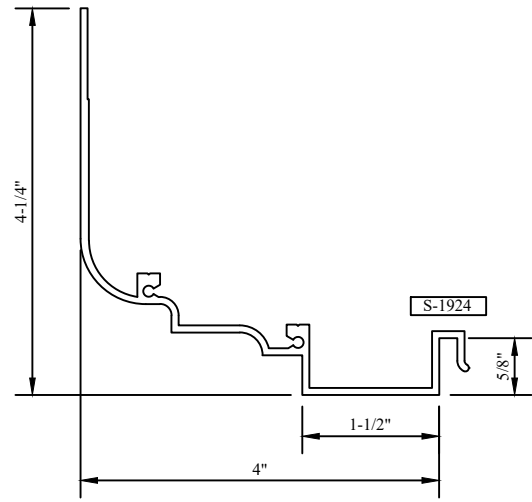
"C" RETURN HEAD/JAMB PANNING
CR



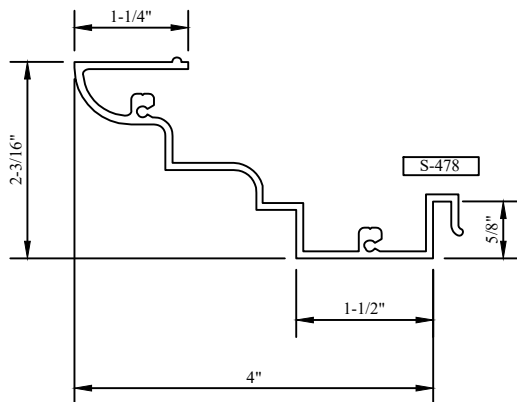
"MC" HEAD/JAMB PANNING
MC



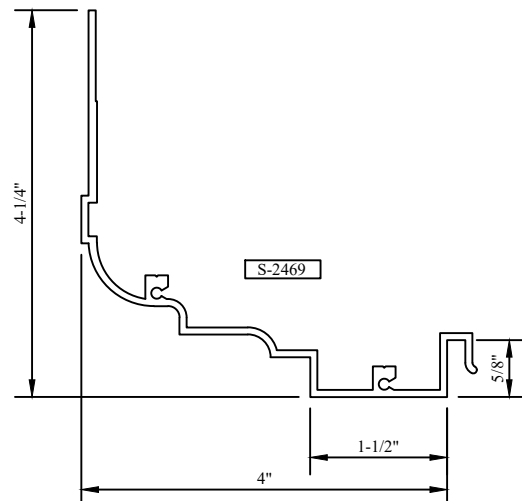
"M" HEAD/JAMB PANNING
M



"M2" HEAD/JAMB PANNING
M2

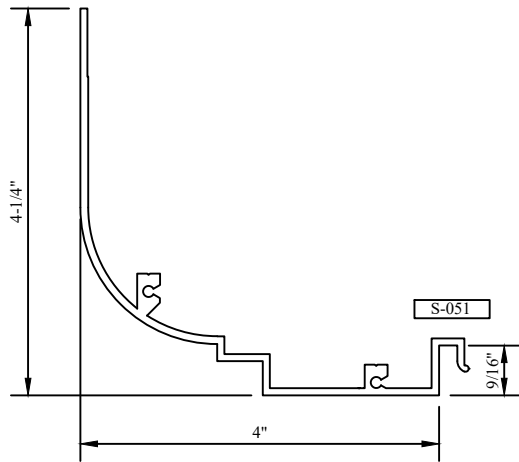


"MR" RETURN HEAD/JAMB PANNING
MR

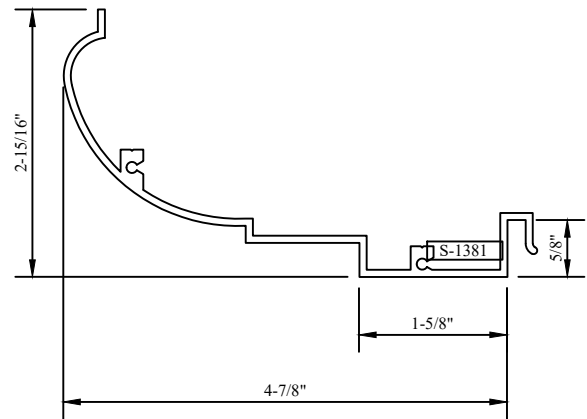


"MB" HEAD/JAMB PANNING
MB

Half Scale Sections

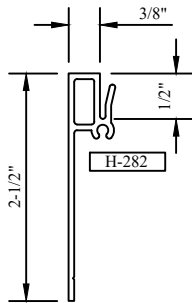


"U" HEAD/JAMB PANNING
U

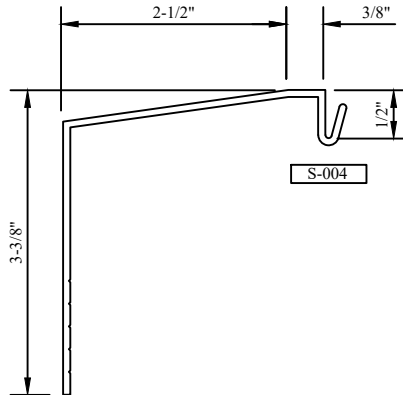


"NN" HEAD/JAMB PANNING
NN

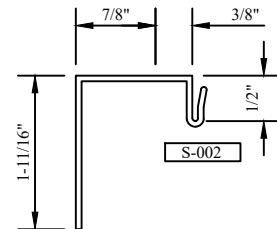
Half Scale Sections



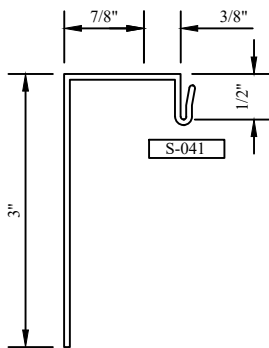
"HT" SILL PANNING
HT (SILL)



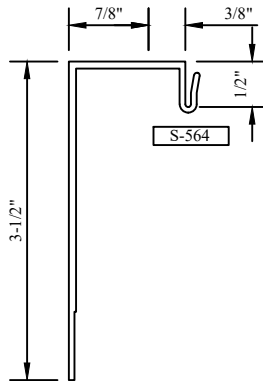
"D" SILL PANNING
D (SILL)



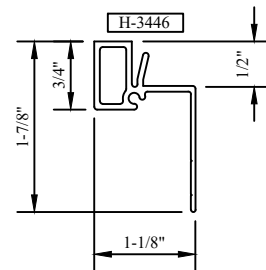
"B" SILL PANNING
B (SILL)



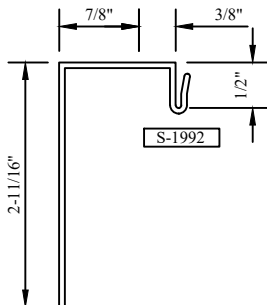
"E" SILL PANNING
E (SILL)



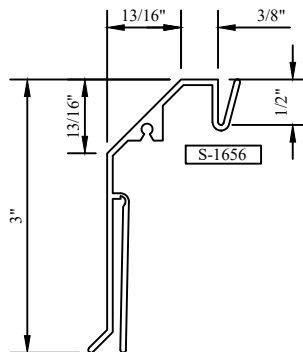
"E" MODIFIED SILL PANNING
EM (SILL)



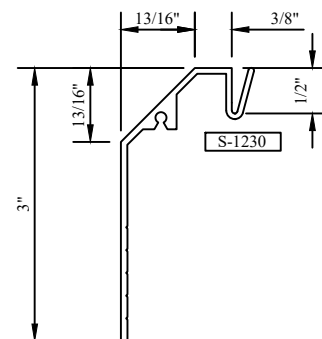
"NF" SILL PANNING
NF (SILL)



"EB" SILL PANNING
EB (SILL)

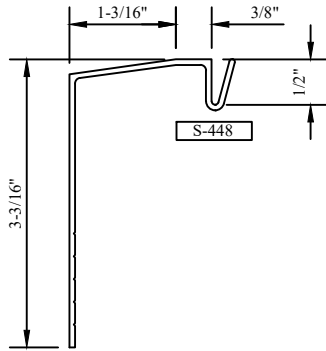


"K" SILL PANNING
K (SILL)

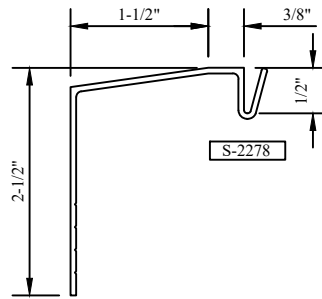


"KK" SILL PANNING
KK (SILL)

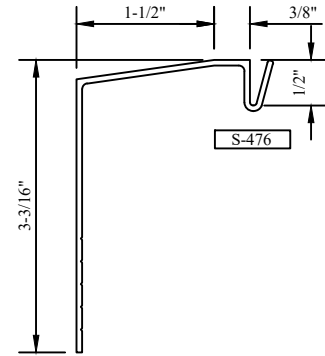
Half Scale Sections



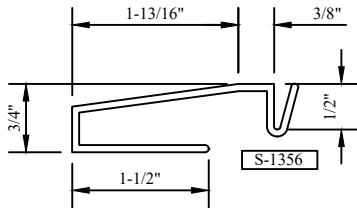
"EE" SILL PANNING
EE (SILL)



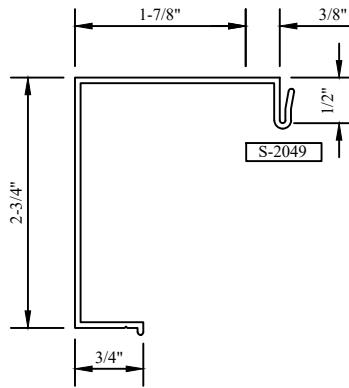
"B2" SILL PANNING
B2 (SILL)



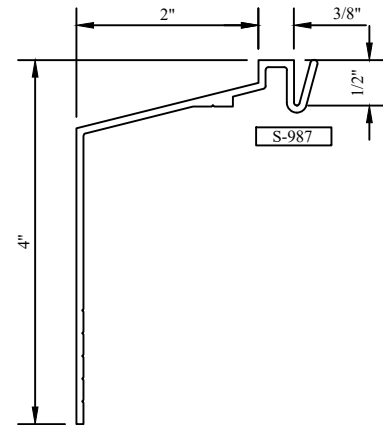
"CC" SILL PANNING
CC (SILL)



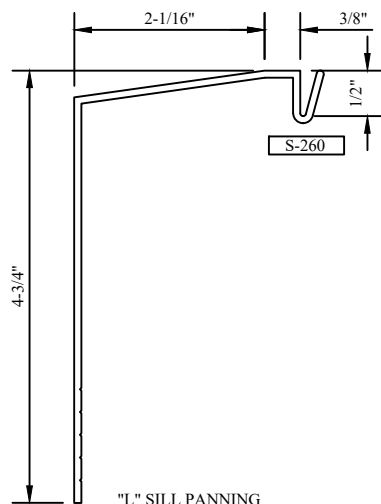
"IR" SILL PANNING
IR (SILL)



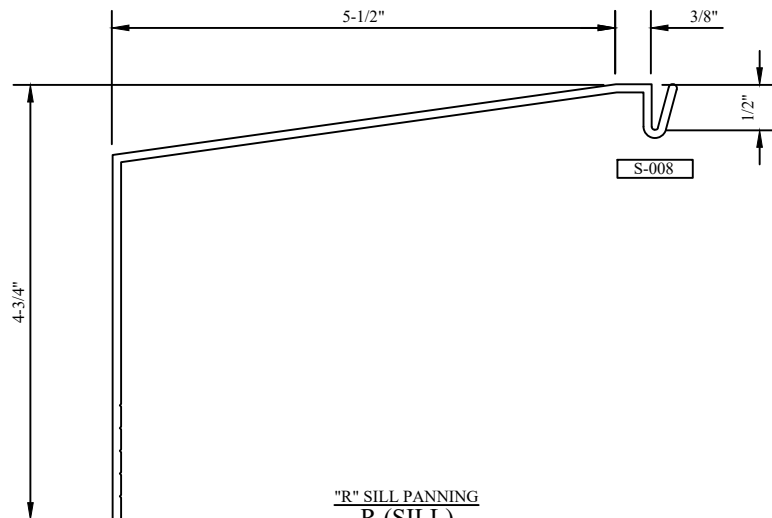
"EC" SILL PANNING
EC (SILL)



"GG" SILL PANNING
GG (SILL)

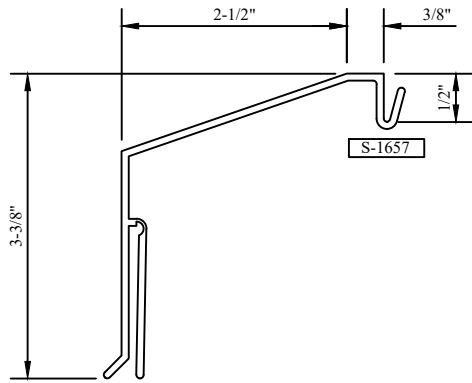


"L" SILL PANNING
L (SILL)



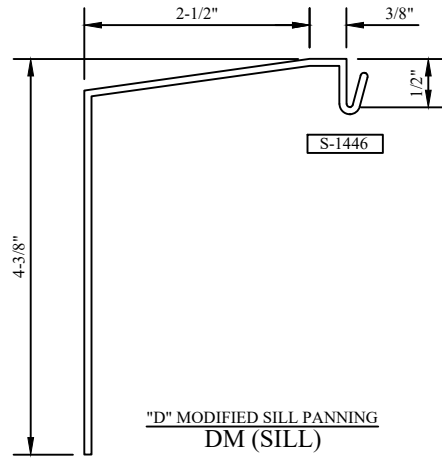
"R" SILL PANNING
R (SILL)

Half Scale Sections



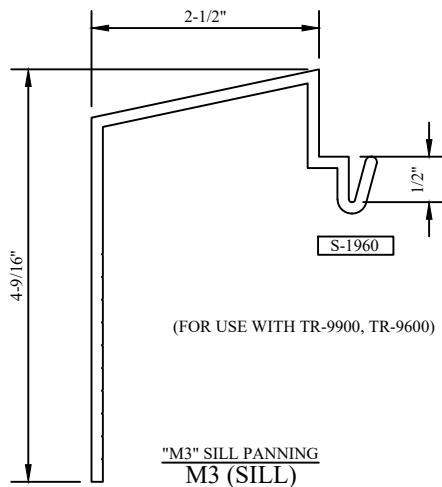
"PP" SILL PANNING
PP (SILL)

S-1657



"D" MODIFIED SILL PANNING
DM (SILL)

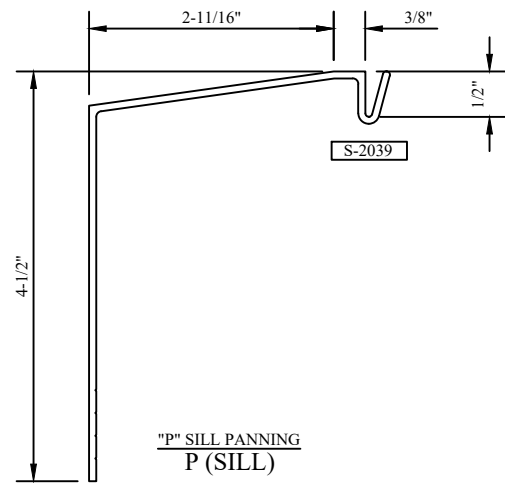
S-1446



"M3" SILL PANNING
M3 (SILL)

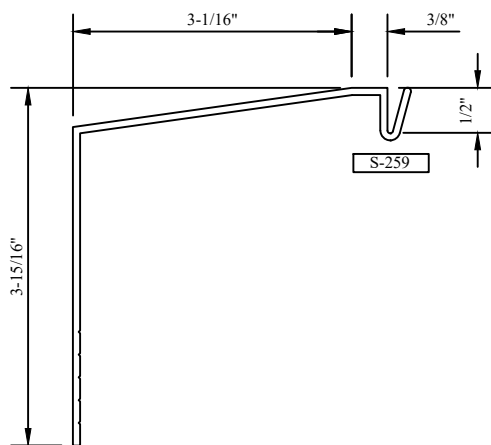
S-1960

(FOR USE WITH TR-9900, TR-9600)



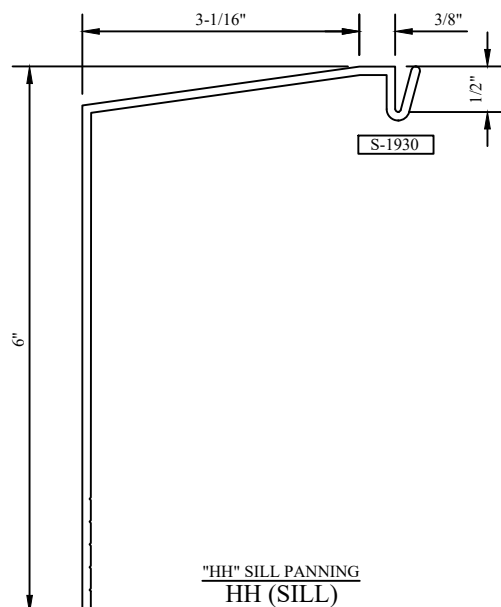
"P" SILL PANNING
P (SILL)

S-2039



"T" SILL PANNING
T (SILL)

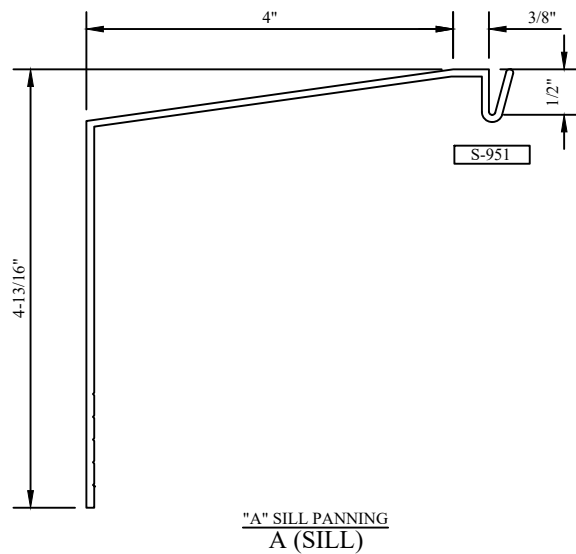
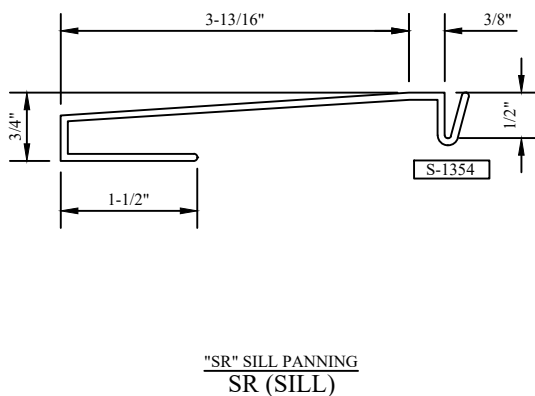
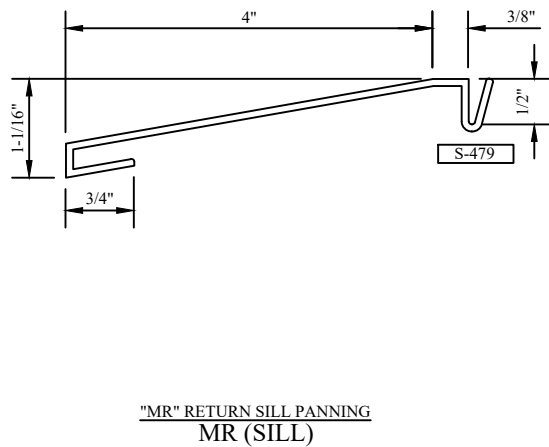
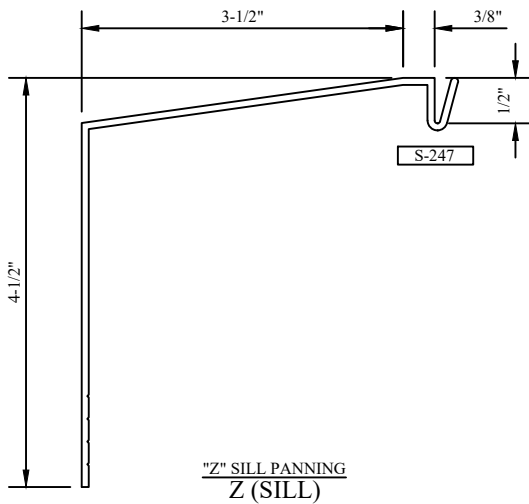
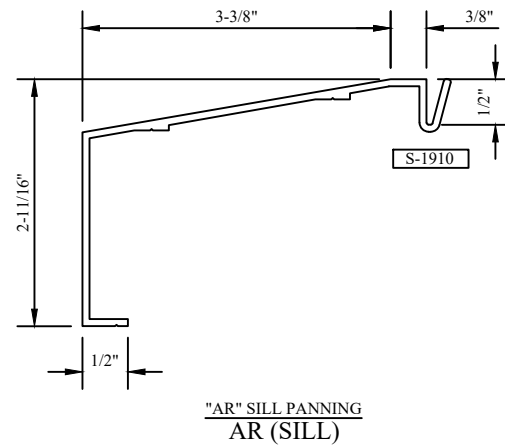
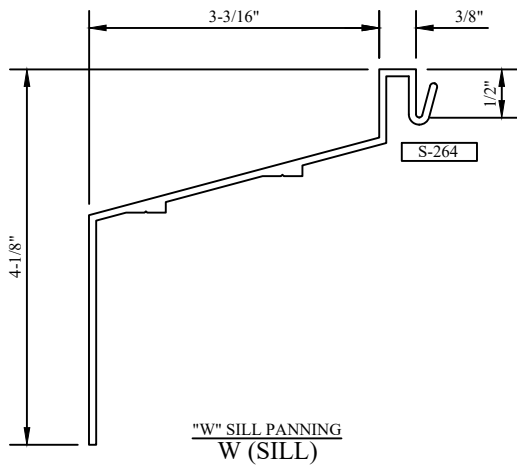
S-259



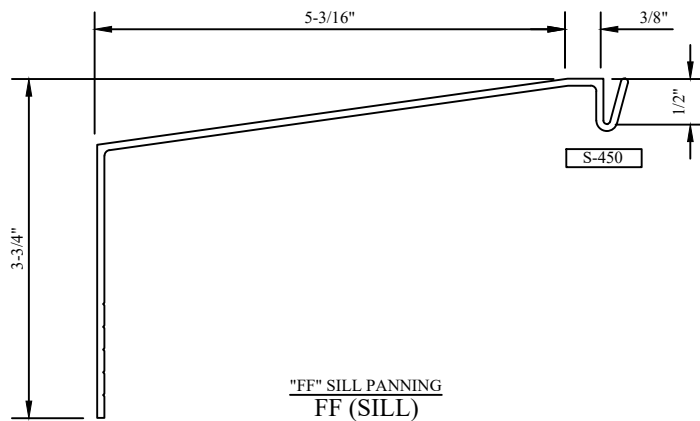
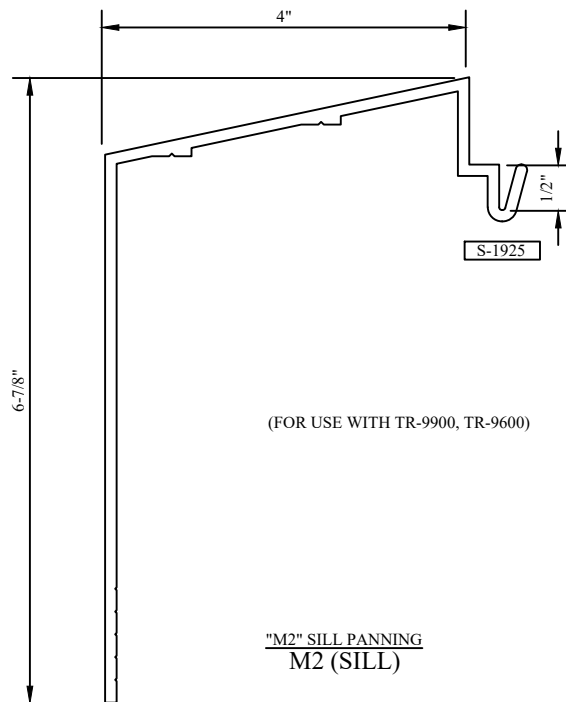
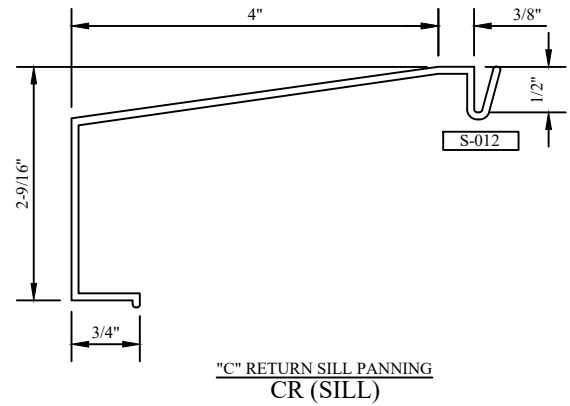
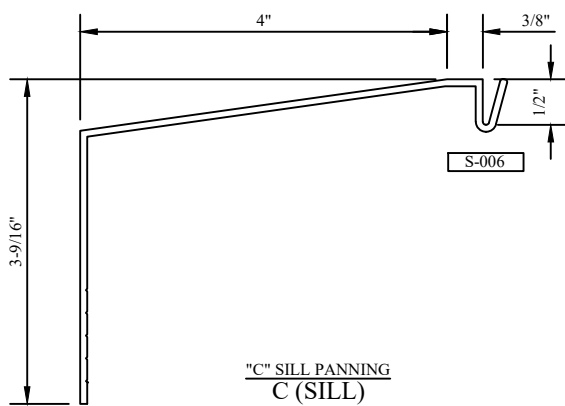
"HH" SILL PANNING
HH (SILL)

S-1930

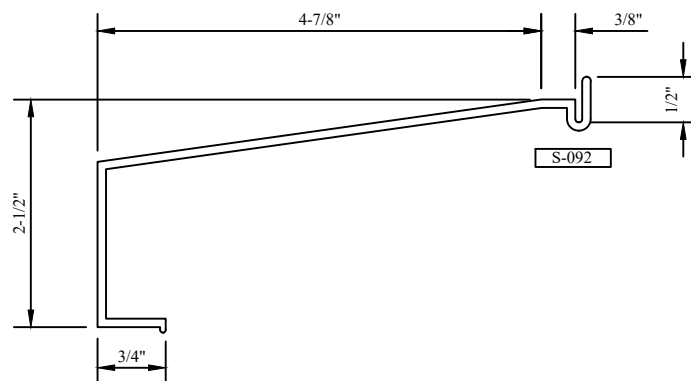
Half Scale Sections



Half Scale Sections

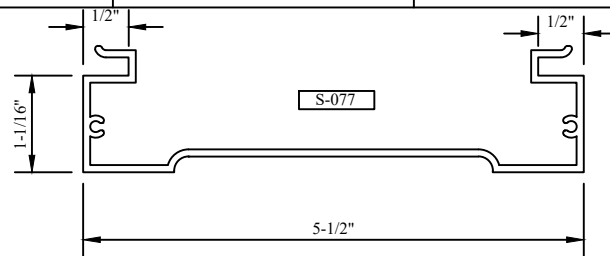


Half Scale Sections

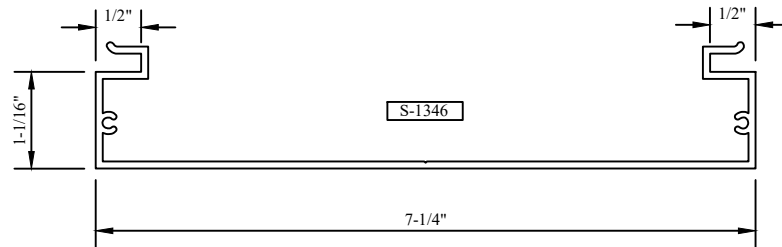


"N" RETURN SILL PANNING
NR (SILL)

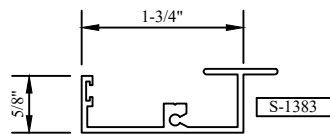
Half Scale Sections



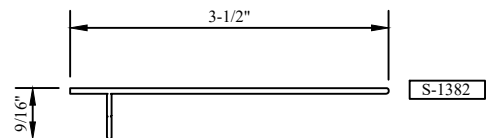
5-1/2" SPECIAL PANNING MULLION



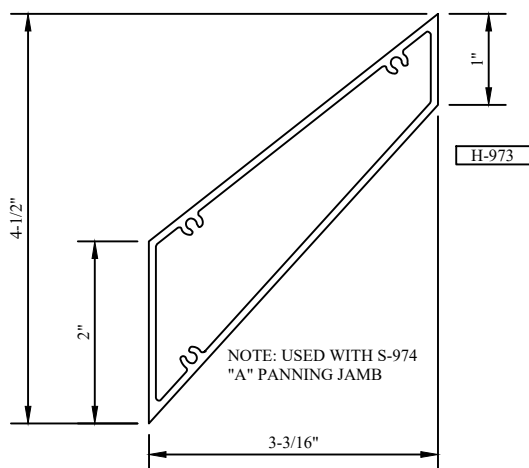
7-1/4" SPECIAL PANNING MULLION



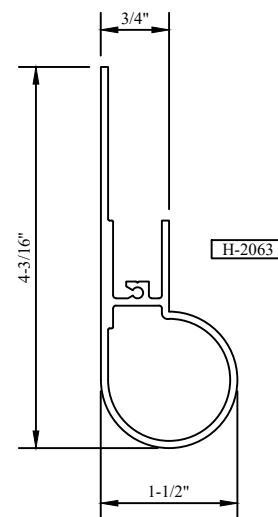
PANNING ADAPTER (HEAD/JAMB)



PANNING ADAPTER (SILL)



PANNING SPREADER BAR



EXTERIOR TRIM PANNING

Available Combinations

HD	JB	SL
A3	A3	T
A4	A4	MR
A5	A5	D
A6	A6	T
AA	AA	C
AA	AA	D
AA	AA	DM
AA	AA	L
AR	AR	AR
AR	AR	C
AR	AR	SR
AR	AR	NR
AR	AR	Z
B	B	B
B	B	CC
B	B	D
B	B	E
B	B	E2
B	B	EB
B	B	EE
B	B	EM
B	B	IR
B	B	KK
B	B	L
B	B	T
B	B	Z
BB	BB	R
B	E	B
B	E	CC
B	E	E
B	E	EB
B	E	EM
B	E	KK
B	EM	B
B	EM	CC
B	EM	KK
C	C	A
C	C	C
C	C	CR
C	C	NC
C	C	R
C	CM	A
C	CM	C
CC	B	CC
CC	CC	C
CC	CC	CC
CC	CC	E2
CC	CC	L
CC	LL	CC
CM	C	A
CM	C	C
CM	CM	A
CM	CM	C
CM	CM	E
CR	CR	C

HD	JB	SL
CR	CR	CR
CR	CR	MR
CV	CV	EE
D	D	C
D	D	D
D	D	DM
D	D	M3
D	D	NC
D	D	PP
D	D	T
D	D	W
D	D	Z
D	DM	D
D	EM	D
DC	DC	D
DC	DC	DM
DD	DD	C
DD	DD	CR
DD	DD	D
DD	DD	L
DD	DD	MR
DM	D	D
DM	D	DM
DM	D	PP
DM	DM	A
DM	DM	D
DM	DM	DM
DM	DM	FF
DM	DM	M3
DM	DM	Z
DM	JR	D
E	B	B
E	B	CC
E	B	E
E	B	EB
E	B	EM
E	B	KK
E	E	B
E	E	C
E	E	CC
E	E	D
E	E	E
E	E	EB
E	E	EM
E	E	HH
E	E	KK
E	E	M3
E	EM	E
E	EM	KK
E1	EM	B
E1	E1	B
E1	E1	E
E1	E1	EM
E1	EM	EM
E2	E2	E2

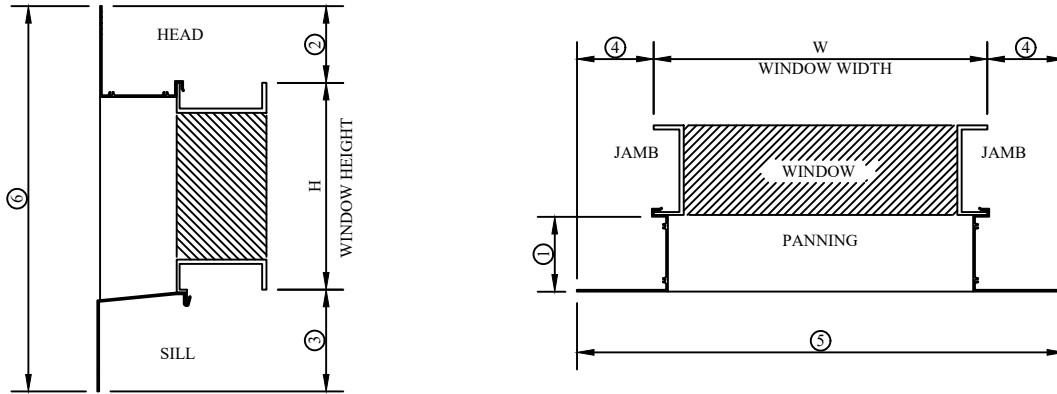
HD	JB	SL
EB	B	EB
EB	E	EB
EB	EB	EB
EB	EB	EM
EC	EC	EC
EM	B	B
EM	B	E
EM	B	EM
EM	B	KK
EM	E	B
EM	E	CC
EM	E	E
EM	E	EB
EM	E	EM
EM	E	KK
EM	EM	A
EM	EM	B
EM	EM	C
EM	EM	CC
EM	EM	D
EM	EM	DM
EM	EM	E
EM	EM	EB
EM	EM	EM
EM	EM	KK
EM	EM	R
F	F	C
F	F	Z
HH	HH	A
HH	HH	C
HH	HH	GG
HH	HH	HH
HH	HH	R
HH	HH	T
HH	HH	W
HH	HH	Z
HT	HT	HT
HT	HT	KK
HH	L	T
IR	IR	D
IR	IR	IR
IR	IR	L
JJ	JJ	CC
JJ	JJ	D
JJ	JJ	E2
JJ	JJ	KK
JJ	JJ	L
JR	JR	C
JR	JR	D
JR	JR	DM
JR	JR	L
JR	JR	NR
L	L	C
L	L	D
L	L	GG
L	L	L

Available Combinations

HD	JB	SL
L	L	M3
L	L	Z
M	M	A
M	M	C
M	M	CC
M	M	CR
M	M	FF
MB	MB	A
MB	MB	M2
MR	MR	C
MR	MR	CR
MR	MR	MR
N	N	AR
N	N	CR
N	N	D
N	N	MR
N	N	R
N	N	T
N	N	Z
NN	NN	FF
NN	NN	R
NN	NN	T
O	O	D
P	P	DM
P	P	P
P	P	PP
P1	P1	Z
PP	PP	EE
PP	PP	T
PR	PR	A
PR	PR	CR
PR	PR	D
PR	PR	L
PR	PR	MR
PR	PR	T
PR	PR	Z
R	R	R
SR	SR	R
SR	SR	SR
T	T	A
T	T	AR
T	T	C
T	T	FF

HD	JB	SL
T	T	HH
T	T	T
T	T	MR
T	T	Z
TM	T	T
TM	TM	A
TM	TM	HH
TM	TM	R
TM	TM	T
TT	TT	C
TT	TT	D
TT	TT	Z
U	U	A
U	U	C
U	U	CR
V	V	C
V	V	D
V	V	DM
V	V	HH
V	V	T
V	V	W
VR	VR	CC
VR	VR	EE
VR	VR	T
W	W	T
W	W	W
W	W	Z
WW	WW	DM
WW	WW	T
Y	Y	A
Y	Y	C
Y	Y	E2
Y	Y	HH
Y	Y	MR
Y	Y	R
Y	Y	T
Y	Y	Z
Z	Z	Z

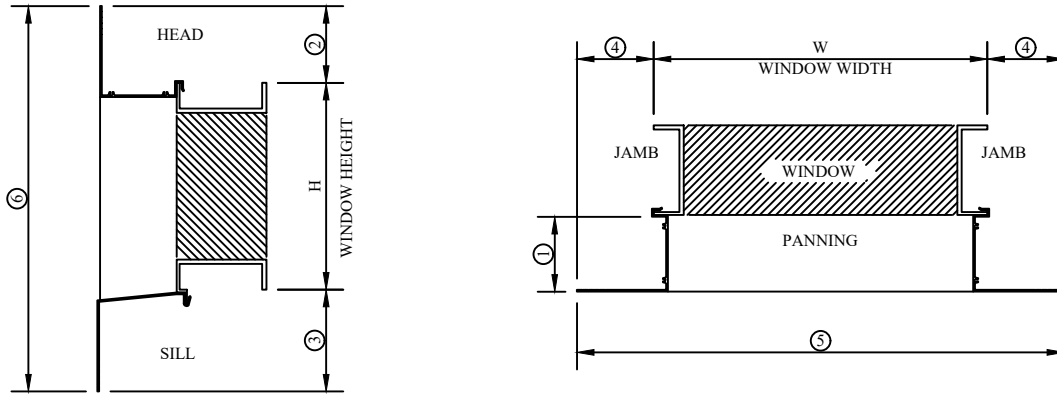
Straight Leg Calculations



RETURN LEG (CANNOT BE EXTENDED OR TRIMMED) SEE DIE DRAWINGS FOR LEG DIMENSION
 STRAIGHT LEG (CAN BE FIELD EXTENDED, WITH EXPANDER, OR FIELD TRIMMED)

PROJECTION ①	RETURN LEG	HEAD	JAMB	SILL	NET GAINS OVER WINDOW SIZE			PANNING TIP-TO-TIP	
		DIE NAME DIE NO.	DIE NAME DIE NO.	DIE NAME DIE NO.	HEAD ②	JAMB ④	SILL ③	WIDTH ⑤	HEIGHT ⑥
1/16"		HT S-281	HT S-281	HT H-282	2 1/16"	2 1/16"	2 1/2"	W+4 1/8"	H+4 9/16"
		HT S-281	HT S-281	KK S-1230	2 1/16"	2 1/16"	3"	W+4 1/8"	H+5 1/16"
3/4"		B S-001	B S-001	B S-002	1 1/2"	1 1/2"	1 11/16"	W+3"	H+3 3/16"
		B S-001	B S-001	CC S-476	1 1/2"	1 1/2"	3 1/4"	W+3"	H+4 3/4"
		B S-001	B S-001	D S-004	1 1/2"	1 1/2"	3 3/8"	W+3"	H+4 7/8"
		B S-001	B S-001	E S-041	1 1/2"	1 1/2"	3"	W+3"	H+4 1/2"
		B S-001	B S-001	E2 S-2278	1 1/2"	1 1/2"	2 1/2"	W+3"	H+4"
		B S-001	B S-001	EB S-1992	1 1/2"	1 1/2"	2 11/16"	W+3"	H+4 3/16"
		B S-001	B S-001	EE S-448	1 1/2"	1 1/2"	3 3/16"	W+3"	H+4 11/16"
		B S-001	B S-001	EM S-2278	1 1/2"	1 1/2"	3 1/2"	W+3"	H+5"
		B S-001	B S-001	KK S-1230	1 1/2"	1 1/2"	3"	W+3"	H+4 1/2"
		B S-001	B S-001	L S-260	1 1/2"	1 1/2"	4 3/4"	W+3"	H+6 1/4"
		B S-001	B S-001	T S-259	1 1/2"	1 1/2"	3 15/16"	W+3"	H+5 7/16"
		B S-001	B S-001	Z S-247	1 1/2"	1 1/2"	4 1/2"	W+3"	H+6"
		B S-001	E S-040	B S-002	1 1/2"	2 9/16"	1 11/16"	W+5 1/8"	H+3 3/16"
		B S-001	E S-040	CC S-476	1 1/2"	2 9/16"	3 3/16"	W+5 1/8"	H+4 11/16"
		B S-001	E S-040	E S-041	1 1/2"	2 9/16"	3"	W+5 1/8"	H+4 1/2"

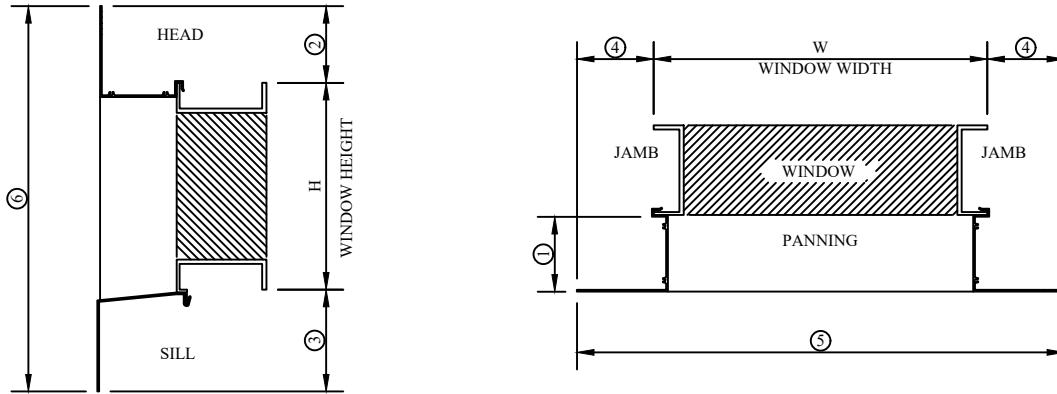
Straight Leg Calculations



RETURN LEG (CANNOT BE EXTENDED OR TRIMMED) SEE DIE DRAWINGS FOR LEG DIMENSION
STRAIGHT LEG (CAN BE FIELD EXTENDED, WITH EXPANDER, OR FIELD TRIMMED)

PROJECTION ①	RETURN LEG	HEAD	JAMB	SILL	NET GAINS OVER WINDOW SIZE			PANNING TIP-TO-TIP	
		DIE NAME DIE NO.	DIE NAME DIE NO.	DIE NAME DIE NO.	HEAD ②	JAMB ④	SILL ③	WIDTH ⑤	HEIGHT ⑥
3/4"		B S-001	E S-040	EB S-1992	1 1/2"	2 9/16"	2 11/16"	W+5 1/8"	H+4 3/16"
		B S-001	E S-040	EM S-569	1 1/2"	2 9/16"	3 1/2"	W+5 1/8"	H+5"
		B S-001	E S-040	KK S-1230	1 1/2"	2 9/16"	3 1/2"	W+5 1/8"	H+5"
		B S-001	EM S-563	B S-002	1 1/2"	3 9/16"	1 11/16"	W+7 1/8"	H+3 3/16"
		B S-001	EM S-563	CC S-476	1 1/2"	3 9/16"	3 3/16"	W+7 1/8"	H+4 11/16"
		B S-001	EM S-563	KK S-1230	1 1/2"	3 9/16"	3 1/2"	W+7 1/8"	H+5"
		E S-040	B S-001	B S-002	2 9/16"	1 1/2"	1 11/16"	W+3"	H+4 1/4"
		E S-040	B S-001	CC S-476	2 9/16"	1 1/2"	3 3/16"	W+3"	H+5 3/4"
		E S-040	B S-001	E S-041	2 9/16"	1 1/2"	3"	W+3"	H+5 9/16"
		E S-040	B S-001	EB S-1992	2 9/16"	1 1/2"	2 11/16"	W+3"	H+5 1/4"
		E S-040	B S-001	EM S-564	2 9/16"	1 1/2"	3 1/2"	W+3"	H+6 1/16"
		E S-040	B S-001	KK S-1230	2 9/16"	1 1/2"	3"	W+3"	H+5 9/16"
		E S-040	E S-040	B S-001	2 9/16"	2 9/16"	1 11/16"	W+5 1/8"	H+4 1/4"
		E S-040	E S-040	C S-006	2 9/16"	2 9/16"	3 9/16"	W+5 1/8"	H+6 1/8"
		E S-040	E S-040	CC S-476	2 9/16"	2 9/16"	3 3/16"	W+5 1/8"	H+5 3/4"
		E S-040	E S-040	D S-004	2 9/16"	2 9/16"	3 3/8"	W+5 1/8"	H+5 15/16"
		E S-040	E S-040	E S-041	2 9/16"	2 9/16"	3"	W+5 1/8"	H+5 9/16"

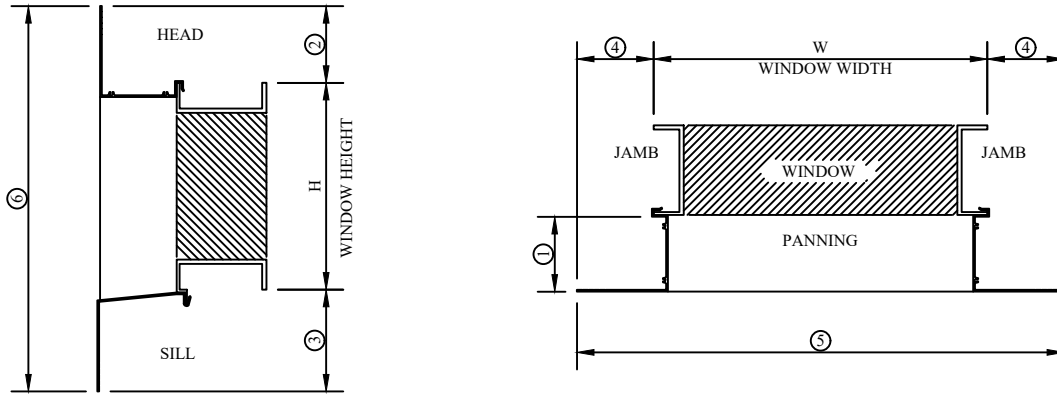
Straight Leg Calculations



RETURN LEG (CANNOT BE EXTENDED OR TRIMMED) SEE DIE DRAWINGS FOR LEG DIMENSION
STRAIGHT LEG (CAN BE FIELD EXTENDED, WITH EXPANDER, OR FIELD TRIMMED)

PROJECTION ①	RETURN LEG	HEAD	JAMB	SILL	NET GAINS OVER WINDOW SIZE			PANNING TIP-TO-TIP	
		DIE NAME DIE NO.	DIE NAME DIE NO.	DIE NAME DIE NO.	HEAD ②	JAMB ④	SILL ③	WIDTH ⑤	HEIGHT ⑥
3/4"		E S-040	E S-040	EB S-1992	2 9/16"	2 9/16"	2 11/16"	W+5 1/8"	H+5 1/4"
		E S-040	E S-040	EM S-564	2 9/16"	2 9/16"	3 1/2"	W+5 1/8"	H+6 1/16"
		E S-040	E S-040	HH S-1930	2 9/16"	2 9/16"	6"	W+5 1/8"	H+8 9/16"
		E S-040	E S-040	MM S-1230	2 9/16"	2 9/16"	3"	W+5 1/8"	H+5 9/16"
		E S-040	E S-040	M3 S-1960	2 9/16"	2 9/16"	3 9/16"	W+5 1/8"	H+6 1/8"
		E S-040	EM S-563	E S-041	2 9/16"	3 9/16"	3"	W+7 1/8"	H+5 9/16"
		E S-040	EM S-563	KK S-1230	2 9/16"	3 9/16"	3"	W+7 1/8"	H+5 9/16"
		E1 S-2257	EM S-563	B S-001	4 9/16"	3 9/16"	1 11/16"	W+7 1/8"	H+6 1/4"
		E1 S-2257	E1 S-2257	B S-001	4 9/16"	4 9/16"	1 11/16"	W+9 1/8"	H+6 1/4"
		E1 S-2257	E1 S-2257	E S-041	4 9/16"	4 9/16"	3"	W+9 1/8"	H+7 9/16"
		E1 S-2257	E1 S-2257	EM S-564	4 9/16"	4 9/16"	3 1/2"	W+9 1/8"	H+8 1/16"
		E1 S-2257	EM S-563	EM S-564	4 9/16"	3 9/16"	3 1/2"	W+7 1/8"	H+8 1/16"
		EB S-1991	B S-001	EB S-1992	1 3/4"	1 3/4"	2 11/16"	W+3 1/2"	H+4 7/16"
		EB S-1991	E S-040	EB S-1992	1 3/4"	2 9/16"	2 11/16"	W+5 1/8"	H+4 7/16"
		EB S-1991	EB S-1991	EB S-1992	1 3/4"	1 3/4"	2 11/16"	W+3 1/2"	H+4 7/16"
		EB S-1991	EB S-1991	EM S-564	1 3/4"	1 3/4"	3 1/2"	W+3 1/2"	H+5 1/4"
		EM S-563	B S-001	B S-002	3 9/16"	1 1/2"	1 11/16"	W+3"	H+5 1/4"

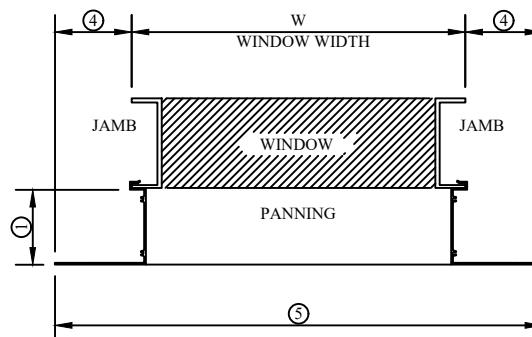
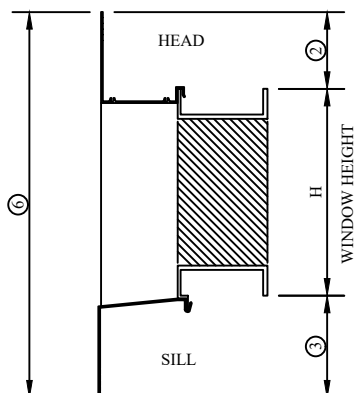
Straight Leg Calculations



RETURN LEG (CANNOT BE EXTENDED OR TRIMMED) SEE DIE DRAWINGS FOR LEG DIMENSION
STRAIGHT LEG (CAN BE FIELD EXTENDED, WITH EXPANDER, OR FIELD TRIMMED)

PROJECTION ①	RETURN LEG	HEAD	JAMB	SILL	NET GAINS OVER WINDOW SIZE			PANNING TIP-TO-TIP	
		DIE NAME DIE NO.	DIE NAME DIE NO.	DIE NAME DIE NO.	HEAD ②	JAMB ④	SILL ③	WIDTH ⑤	HEIGHT ⑥
3/4"		EM S-563	B S-001	E S-041	3 9/16"	1 1/2"	3"	W+3"	H+6 9/16"
		EM S-563	B S-001	EM S-564	3 9/16"	1 1/2"	3 1/2"	W+3"	H+7 1/16"
		EM S-563	B S-001	KK S-1230	3 9/16"	1 1/2"	3"	W+3"	H+6 9/16"
		EM S-563	E S-040	B S-002	3 9/16"	2 9/16"	1 11/16"	W+5 1/8"	H+5 1/4"
		EM S-563	E S-040	CC S-476	3 9/16"	2 9/16"	3 3/16"	W+5 1/8"	H+6 3/4"
		EM S-563	E S-040	E S-041	3 9/16"	2 9/16"	3"	W+5 1/8"	H+6 9/16"
		EM S-563	E S-040	EB S-1922	3 9/16"	2 9/16"	2 11/16"	W+5 1/8"	H+6 1/4"
		EM S-563	E S-040	EM S-564	3 9/16"	2 9/16"	3 1/2"	W+5 1/8"	H+7 1/16"
		EM S-563	E S-040	KK S-1230	3 9/16"	2 9/16"	3"	W+5 1/8"	H+6 9/16"
		EM S-563	EM S-563	A S-1230	3 9/16"	3 9/16"	4 13/16"	W+7 1/8"	H+8 3/8"
		EM S-563	EM S-563	B S-001	3 9/16"	3 9/16"	1 11/16"	W+7 1/8"	H+5 1/4"
		EM S-563	EM S-563	C S-006	3 9/16"	3 9/16"	3 9/16"	W+7 1/8"	H+7 1/8"
		EM S-563	EM S-563	CC S-476	3 9/16"	3 9/16"	3 3/16"	W+7 1/8"	H+6 3/4"
		EM S-563	EM S-563	D S-004	3 9/16"	3 9/16"	3 3/8"	W+7 1/8"	H+6 15/16"
		EM S-563	EM S-563	DM S-1446	3 9/16"	3 9/16"	4 3/8"	W+7 1/8"	H+7 15/16"
		EM S-563	EM S-563	E S-041	3 9/16"	3 9/16"	3"	W+7 1/8"	H+6 9/16"
		EM S-563	EM S-563	EB S-1992	3 9/16"	3 9/16"	2 11/16"	W+7 1/8"	H+6 1/4"

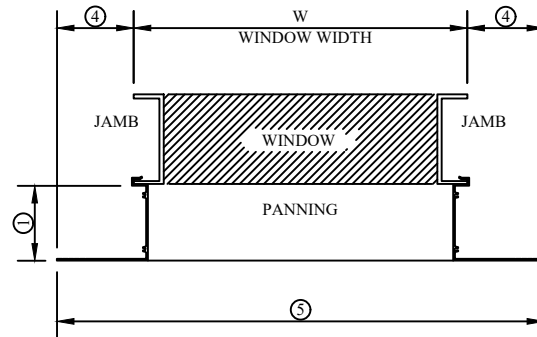
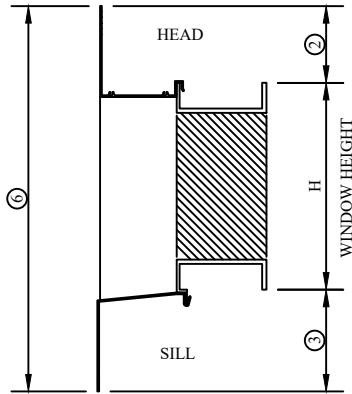
Straight Leg Calculations



RETURN LEG (CANNOT BE EXTENDED OR TRIMMED) SEE DIE DRAWINGS FOR LEG DIMENSION
STRAIGHT LEG (CAN BE FIELD EXTENDED, WITH EXPANDER, OR FIELD TRIMMED)

PROJECTION ①	RETURN LEG	HEAD	JAMB	SILL	NET GAINS OVER WINDOW SIZE			PANNING TIP-TO-TIP	
		DIE NAME DIE NO.	DIE NAME DIE NO.	DIE NAME DIE NO.	HEAD ②	JAMB ④	SILL ③	WIDTH ⑤	HEIGHT ⑥
3/4"		EM S-563	EM S-563	EM S-564	3 9/16"	3 9/16"	3 1/2"	W+7 1/8"	H+7 1/16"
		EM S-563	EM S-563	KK S-1230	3 9/16"	3 9/16"	3"	W+7 1/8"	H+6 9/16"
		EM S-563	EM S-563	R S-008	3 9/16"	3 9/16"	4 3/4"	W+7 1/8"	H+8 5/16"
13/16"		PP S-1391	PP S-1391	EE S-448	2 3/16"	2 3/16"	3 3/16"	W+4 3/8"	H+5 3/8"
		PP S-1391	PP S-1391	T S-259	2 3/16"	2 3/16"	3 15/16"	W+4 3/8"	H+6 1/8"
1 1/16"		CV S-782	CV S-782	EE S-448	1 7/16"	1 7/16"	3 3/16"	W+2 7/8"	H+4 5/8"
1 1/4"		E2 S-2277	E2 S-2277	E2 S-2278	1 15/16"	1 15/16"	2 1/2"	W+3 7/8"	H+4 7/16"
1 1/2"		CC S-447	B S-001	CC S-476	2 7/16"	1 1/2"	3 1/4"	W+3"	H+5 11/16"
		CC S-447	CC S-447	C S-006	2 7/16"	2 7/16"	3 9/16"	W+4 7/8"	H+6"
		CC S-447	CC S-447	CC S-476	2 7/16"	2 7/16"	3 1/4"	W+4 7/8"	H+5 11/16"
		CC S-447	CC S-447	E2 S-2278	2 7/16"	2 7/16"	2 1/2"	W+4 7/8"	H+4 15/16"
		CC S-447	CC S-447	L S-260	2 7/16"	2 7/16"	4 3/4"	W+4 7/8"	H+7 3/16"
		CC S-447	LL S-1262	CC S-476	2 7/16"	3/4"	3 1/4"	W+1 1/2"	H+5 11/16"
		JJ S-1229	JJ S-1229	CC S-260	2 7/16"	2 7/16"	4 3/4"	W+4 7/8"	H+7 3/16"
		JJ S-1229	JJ S-1229	D S-004	2 7/16"	2 7/16"	3 3/8"	W+4 7/8"	H+5 13/16"
		JJ S-1229	JJ S-1229	E2 S-2278	2 7/16"	2 7/16"	2 1/2"	W+4 7/8"	H+4 15/16"
		JJ S-1229	JJ S-1229	KK S-1230	2 7/16"	2 7/16"	3"	W+4 7/8"	H+5 7/16"

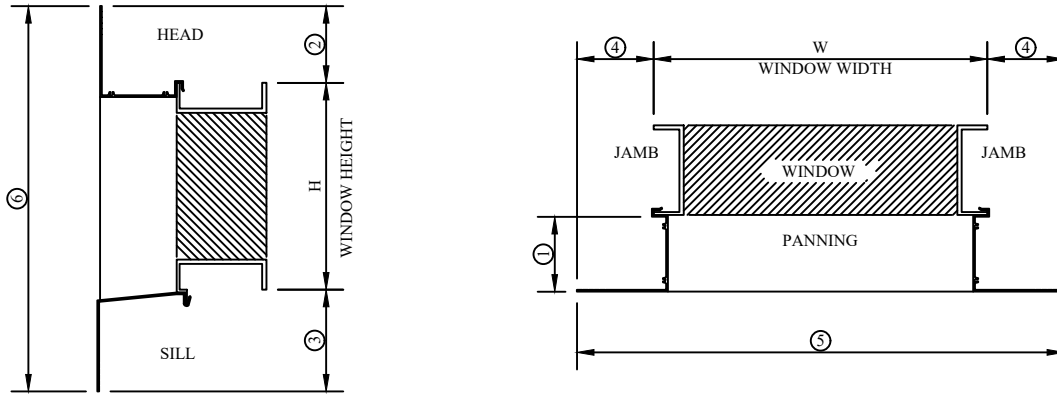
Straight Leg Calculations



RETURN LEG (CANNOT BE EXTENDED OR TRIMMED) SEE DIE DRAWINGS FOR LEG DIMENSION
STRAIGHT LEG (CAN BE FIELD EXTENDED, WITH EXPANDER, OR FIELD TRIMMED)

PROJECTION ①	RETURN LEG	HEAD	JAMB	SILL	NET GAINS OVER WINDOW SIZE			PANNING TIP-TO-TIP	
		DIE NAME DIE NO.	DIE NAME DIE NO.	DIE NAME DIE NO.	HEAD ②	JAMB ④	SILL ③	WIDTH ⑤	HEIGHT ⑥
1 1/2"		JJ S-1229	JJ S-1229	L S-260	2 7/16"	2 7/16"	4 3/4"	W+4 7/8"	H+7 3/16"
1 5/8"		AA S-421	AA S-421	C S-006	1 15/16"	1 15/16"	3 9/16"	W+3 7/8"	H+5 1/2"
		AA S-421	AA S-421	D S-004	1 15/16"	1 15/16"	3 3/8"	W+3 7/8"	H+5 5/16"
		AA S-421	AA S-421	DM S-1446	1 15/16"	1 15/16"	4 3/8"	W+3 7/8"	H+6 5/16"
		AA S-421	AA S-421	L S-260	1 15/16"	1 15/16"	4 3/4"	W+3 7/8"	H+6 11/16"
2"		DD S-435	DD S-435	C S-006	1 1/4"	1 1/4"	3 9/16"	W+2 1/2"	H+4 13/16"
		DD S-435	DD S-435	D S-004	1 1/4"	1 1/4"	3 3/8"	W+2 1/2"	H+4 5/8"
		DD S-435	DD S-435	L S-260	1 1/4"	1 1/4"	4 3/4"	W+2 1/2"	H+6"
		L S-084	L S-084	C S-006	2 15/16"	2 15/16"	3 9/16"	W+5 7/8"	H+6 1/2"
		L S-084	L S-084	D S-004	2 15/16"	2 15/16"	3 3/8"	W+5 7/8"	H+6 5/16"
		L S-084	L S-084	GG S-987	2 15/16"	2 15/16"	4"	W+5 7/8"	H+6 15/16"
		L S-084	L S-084	L S-260	2 15/16"	2 15/16"	4 3/4"	W+5 7/8"	H+7 11/16"
		L S-084	L S-084	M3 S-1960	2 15/16"	2 15/16"	3 9/16"	W+5 7/8"	H+6 1/2"
		L S-084	L S-084	Z S-247	2 15/16"	2 15/16"	4 1/2"	W+5 7/8"	H+7 7/16"
		D S-249	D S-249	D S-004	2 1/4"	2 1/4"	3 3/8"	W+4 1/2"	H+5 5/8"
2 1/8"		N S-1635	N S-1635	AR S-1910	1 15/16"	1 15/16"	2 11/16"	W+3 7/8"	H+4 5/8"
		N S-1635	N S-1635	CR S-012	1 15/16"	1 15/16"	2 9/16"	W+3 7/8"	H+4 1/2"

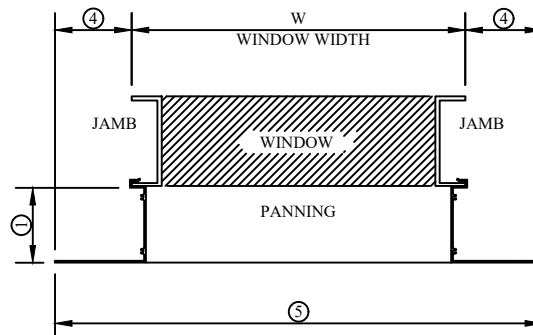
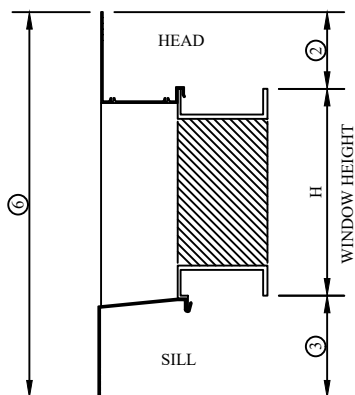
Straight Leg Calculations



RETURN LEG (CANNOT BE EXTENDED OR TRIMMED) SEE DIE DRAWINGS FOR LEG DIMENSION
STRAIGHT LEG (CAN BE FIELD EXTENDED, WITH EXPANDER, OR FIELD TRIMMED)

PROJECTION ①	RETURN LEG	HEAD	JAMB	SILL	NET GAINS OVER WINDOW SIZE			PANNING TIP-TO-TIP	
		DIE NAME DIE NO.	DIE NAME DIE NO.	DIE NAME DIE NO.	HEAD ②	JAMB ④	SILL ③	WIDTH ⑤	HEIGHT ⑥
2 1/8"		N S-1635	N S-1635	D S-004	1 15/16"	1 15/16"	3 3/8"	W+3 7/8"	H+5 5/16"
		N S-1635	N S-1635	R S-008	1 15/16"	1 15/16"	4 3/4"	W+3 7/8"	H+6 11/16"
		N S-1635	N S-1635	T S-259	1 15/16"	1 15/16"	3 15/16"	W+3 7/8"	H+5 7/8"
		N S-1635	N S-1635	Z S-247	1 15/16"	1 15/16"	4 1/2"	W+3 7/8"	H+6 7/16"
2 1/4"		TT S-1551	TT S-1551	C S-006	1 1/2"	1 1/2"	3 9/16"	W+3"	H+5 1/16"
		TT S-1551	TT S-1551	D S-004	1 1/2"	1 1/2"	3 3/8"	W+3"	H+4 7/8"
		TT S-1551	TT S-1551	Z S-247	1 1/2"	1 1/2"	4 1/2"	W+3"	H+6"
2 3/8"		D S-003	D S-003	C S-006	2 7/16"	2 7/16"	3 9/16"	W+4 7/8"	H+6"
		D S-003	D S-003	D S-004	2 7/16"	2 7/16"	3 3/8"	W+4 7/8"	H+5 13/16"
		D S-003	D S-003	DM S-1446	2 7/16"	2 7/16"	4 3/8"	W+4 7/8"	H+6 13/16"
		D S-003	D S-003	M3 S-1960	2 7/16"	2 7/16"	3 9/16"	W+4 7/8"	H+6"
		D S-003	D S-003	PP S-1657	2 7/16"	2 7/16"	3 3/8"	W+4 7/8"	H+5 13/16"
		D S-003	D S-003	T S-259	2 7/16"	2 7/16"	3 15/16"	W+4 7/8"	H+6 3/8"
		D S-003	D S-003	W S-264	2 7/16"	2 7/16"	4 1/8"	W+4 7/8"	H+6 9/16"
		D S-003	D S-003	Z S-247	2 7/16"	2 7/16"	4 1/2"	W+4 7/8"	H+6 15/16"
		D S-003	DM S-042	D S-004	2 7/16"	3 7/16"	3 3/8"	W+6 7/8"	H+5 13/16"
		D S-003	EM S-563	D S-004	2 7/16"	3 7/16"	3 3/8"	W+6 7/8"	H+5 13/16"

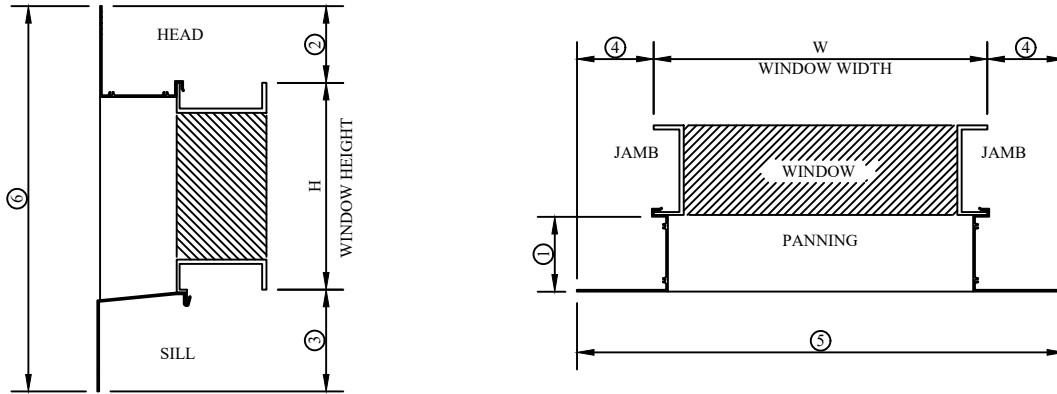
Straight Leg Calculations



RETURN LEG (CANNOT BE EXTENDED OR TRIMMED) SEE DIE DRAWINGS FOR LEG DIMENSION
STRAIGHT LEG (CAN BE FIELD EXTENDED, WITH EXPANDER, OR FIELD TRIMMED)

PROJECTION ①	RETURN LEG	HEAD	JAMB	SILL	NET GAINS OVER WINDOW SIZE			PANNING TIP-TO-TIP	
		DIE NAME DIE NO.	DIE NAME DIE NO.	DIE NAME DIE NO.	HEAD ②	JAMB ④	SILL ③	WIDTH ⑤	HEIGHT ⑥
2 3/8"		DM S-042	D S-003	D S-004	3 7/16"	2 7/16"	3 3/8"	W+4 7/8"	H+6 13/16"
		DM S-042	D S-003	DM S-1446	3 7/16"	2 7/16"	4 3/8"	W+4 7/8"	H+7 13/16"
		DM S-042	D S-003	PP S-1657	3 7/16"	2 7/16"	3 3/8"	W+4 7/8"	H+6 13/16"
		DM S-042	DM S-042	A S-951	3 7/16"	3 7/16"	4 13/16"	W+6 7/8"	H+8 1/4"
		DM S-042	DM S-042	D S-004	3 7/16"	3 7/16"	3 3/8"	W+6 7/8"	H+6 13/16"
		DM S-042	DM S-042	DM S-1446	3 7/16"	3 7/16"	4 3/8"	W+6 7/8"	H+7 13/16"
		DM S-042	DM S-042	FF S-450	3 7/16"	3 7/16"	3 3/4"	W+6 7/8"	H+7 3/16"
		DM S-042	DM S-042	M3 S-1960	3 7/16"	3 7/16"	3 9/16"	W+6 7/8"	H+7"
		DM S-042	DM S-042	Z S-247	3 7/16"	3 7/16"	4 1/2"	W+6 7/8"	H+7 15/16"
		V S-263	V S-263	C S-006	2 3/16"	2 3/16"	3 9/16"	W+4 3/8"	H+5 3/4"
		V S-263	V S-263	D S-004	2 3/16"	2 3/16"	3 3/8"	W+4 3/8"	H+5 9/16"
		V S-263	V S-263	DM S-1446	2 3/16"	2 3/16"	4 3/8"	W+4 3/8"	H+6 9/16"
		V S-263	V S-263	HH S-1930	2 3/16"	2 3/16"	6"	W+4 3/8"	H+8 3/16"
		V S-263	V S-263	T S-259	2 3/16"	2 3/16"	3 15/16"	W+4 3/8"	H+6 1/8"
		V S-263	V S-263	W S-264	2 3/16"	2 3/16"	4 1/8"	W+4 3/8"	H+6 5/16"
2 7/16"		DC S-2085	DC S-2085	D S-004	2 15/16"	2 15/16"	3 3/8"	W+5 7/8"	H+6 5/16"
		DC S-2085	DC S-2085	DM S-004	2 15/16"	2 15/16"	4 3/8"	W+5 7/8"	H+7 5/16"

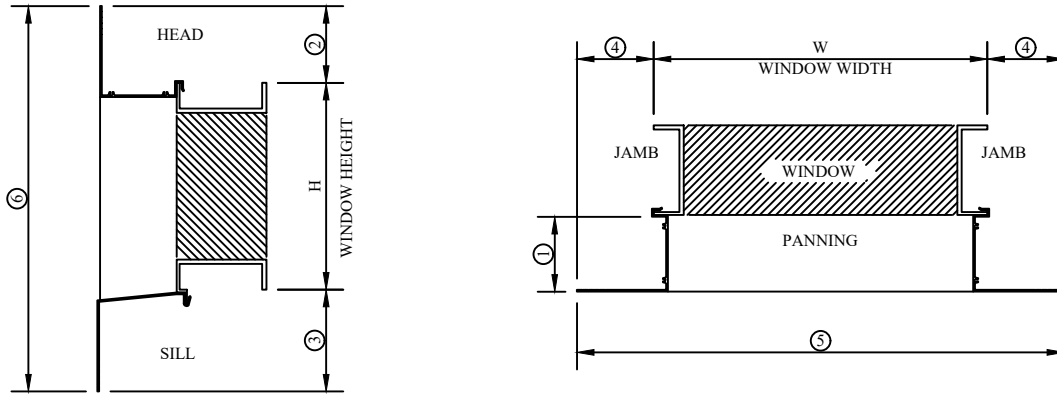
Straight Leg Calculations



RETURN LEG (CANNOT BE EXTENDED OR TRIMMED) SEE DIE DRAWINGS FOR LEG DIMENSION
STRAIGHT LEG (CAN BE FIELD EXTENDED, WITH EXPANDER, OR FIELD TRIMMED)

PROJECTION ①	RETURN LEG	HEAD	JAMB	SILL	NET GAINS OVER WINDOW SIZE			PANNING TIP-TO-TIP	
		DIE NAME DIE NO.	DIE NAME DIE NO.	DIE NAME DIE NO.	HEAD ②	JAMB ④	SILL ③	WIDTH ⑤	HEIGHT ⑥
2 1/2"		A5 S-2953	A5 S-2953	D S-004	3 3/8"	3 3/8"	3 3/8"	W+6 3/4"	H+6 3/4"
		P S-2038	P S-2038	DM S-1446	2 15/16"	2 15/16"	4 3/8"	W+5 7/8"	H+7 5/16"
		P S-2038	P S-2038	P S-2039	2 15/16"	2 15/16"	4 1/2"	W+5 7/8"	H+7 7/16"
		P S-2038	P S-2038	PP S-1657	2 15/16"	2 15/16"	3 3/8"	W+5 7/8"	H+6 5/16"
		WW S-1630	WW S-1630	DM S-1446	2 15/16"	2 15/16"	4 3/8"	W+5 7/8"	H+7 5/16"
		WW S-1630	WW S-1630	T S-259	2 15/16"	2 15/16"	3 15/16"	W+5 7/8"	H+6 7/8"
3"		HH S-986	HH S-986	A S-951	3 7/16"	3 7/16"	4 1/16"	W+6 7/8"	H+7 1/2"
		HH S-986	HH S-986	C S-006	3 7/16"	3 7/16"	3 9/16"	W+6 7/8"	H+7"
		HH S-986	HH S-986	GG S-987	3 7/16"	3 7/16"	4"	W+6 7/8"	H+7 7/16"
		HH S-986	HH S-986	HH S-1930	3 7/16"	3 7/16"	6"	W+6 7/8"	H+9 7/16"
		HH S-986	HH S-986	R S-008	3 7/16"	3 7/16"	4 3/4"	W+6 7/8"	H+8 3/16"
		HH S-986	HH S-986	T S-259	3 7/16"	3 7/16"	3 15/16"	W+6 7/8"	H+7 3/8"
		HH S-986	HH S-986	W S-264	3 7/16"	3 7/16"	4 1/8"	W+6 7/8"	H+7 9/16"
		HH S-986	HH S-986	Z S-247	3 7/16"	3 7/16"	4 1/2"	W+6 7/8"	H+7 15/16"
		HH S-986	L S-084	T S-259	3 7/16"	2 15/16"	3 15/16"	W+5 7/8"	H+7 3/8"
		Y S-580	Y S-580	A S-951	3 15/16"	3 15/16"	4 13/16"	W+7 7/8"	H+8 3/4"
		Y S-580	Y S-580	C S-006	3 15/16"	3 15/16"	3 9/16"	W+7 7/8"	H+7 1/2"

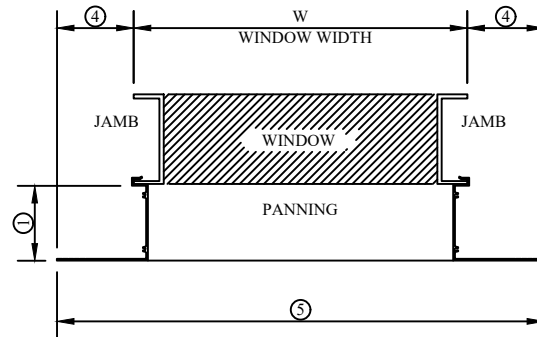
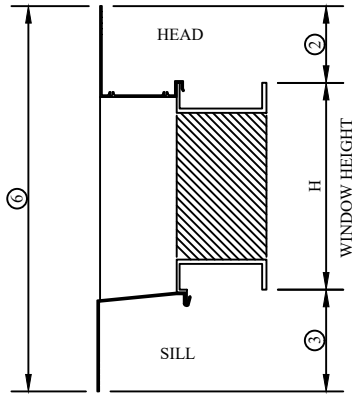
Straight Leg Calculations



RETURN LEG (CANNOT BE EXTENDED OR TRIMMED) SEE DIE DRAWINGS FOR LEG DIMENSION
STRAIGHT LEG (CAN BE FIELD EXTENDED, WITH EXPANDER, OR FIELD TRIMMED)

PROJECTION ①	RETURN LEG	HEAD	JAMB	SILL	NET GAINS OVER WINDOW SIZE			PANNING TIP-TO-TIP	
		DIE NAME DIE NO.	DIE NAME DIE NO.	DIE NAME DIE NO.	HEAD ②	JAMB ④	SILL ③	WIDTH ⑤	HEIGHT ⑥
3"		Y S-580	Y S-580	E2 S-2278	3 15/16"	3 15/16"	2 1/2"	W+7 7/8"	H+6 7/16"
		Y S-580	Y S-580	HH S-1930	3 15/16"	3 15/16"	6"	W+7 7/8"	H+9 15/16"
		Y S-580	Y S-580	R S-008	3 15/16"	3 15/16"	4 3/4"	W+7 7/8"	H+8 11/16"
		Y S-580	Y S-580	T S-259	3 15/16"	3 15/16"	3 15/16"	W+7 7/8"	H+7 7/8"
		Y S-580	Y S-580	Z S-247	3 15/16"	3 15/16"	4 1/2"	W+7 7/8"	H+8 7/16"
		P1 S-2238	P1 S-2238	Z S-247	1 13/16"	1 13/16"	4 1/2"	W+3 5/8"	H+6 5/16"
3 1/16"		T S-258	T S-258	A S-951	3 7/16"	3 7/16"	4 13/16"	W+6 7/8"	H+8 1/4"
		T S-258	T S-258	C S-006	3 7/16"	3 7/16"	3 9/16"	W+6 7/8"	H+7"
		T S-258	T S-258	FF S-450	3 7/16"	3 7/16"	3 3/4"	W+6 7/8"	H+7 3/16"
		T S-258	T S-258	HH S-1930	3 7/16"	3 7/16"	6"	W+6 7/8"	H+9 7/16"
		T S-258	T S-258	T S-259	3 7/16"	3 7/16"	3 15/16"	W+6 7/8"	H+7 3/8"
		T S-258	T S-258	Z S-247	3 7/16"	3 7/16"	4 1/2"	W+6 7/8"	H+7 15/16"
		TM S-975	T S-258	T S-259	5 3/16"	3 7/16"	3 15/16"	W+6 7/8"	H+9 1/8"
		TM S-975	TM S-975	A S-951	5 3/16"	5 3/16"	4 15/16"	W+10 3/8"	H+10 1/8"
		TM S-975	TM S-975	HH S-1930	5 3/16"	5 3/16"	6"	W+10 3/8"	H+11 3/16"
		TM S-975	TM S-975	R S-008	5 3/16"	5 3/16"	4 3/4"	W+10 3/8"	H+9 15/16"
		TM S-975	TM S-975	T S-259	5 3/16"	5 3/16"	3 15/16"	W+10 3/8"	H+9 1/8"

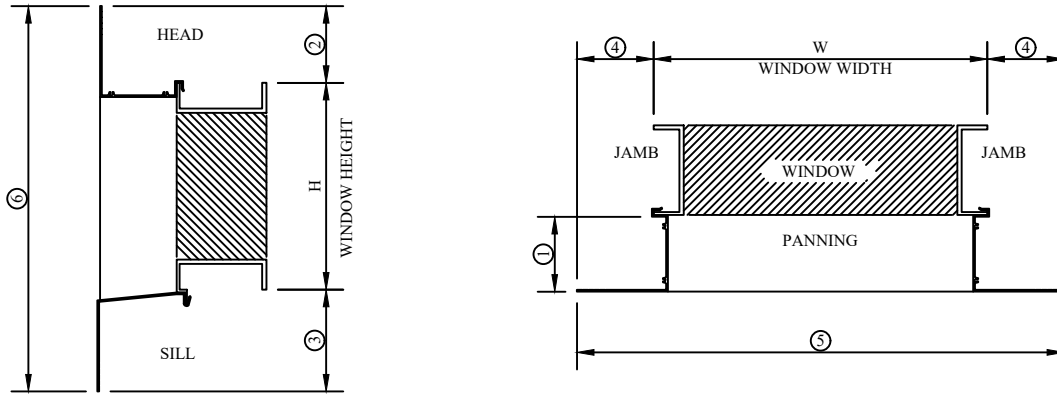
Straight Leg Calculations



RETURN LEG (CANNOT BE EXTENDED OR TRIMMED) SEE DIE DRAWINGS FOR LEG DIMENSION
STRAIGHT LEG (CAN BE FIELD EXTENDED, WITH EXPANDER, OR FIELD TRIMMED)

PROJECTION ①	RETURN LEG	HEAD	JAMB	SILL	NET GAINS OVER WINDOW SIZE			PANNING TIP-TO-TIP	
		DIE NAME DIE NO.	DIE NAME DIE NO.	DIE NAME DIE NO.	HEAD ②	JAMB ④	SILL ③	WIDTH ⑤	HEIGHT ⑥
3 1/8"		A3 S-2884	A3 S-2884	T S-259	3 3/8"	3 3/8"	3 15/16"	W+6 3/4"	H+7 5/16"
		W S-265	W S-265	NC S-1841	4 3/16"	4 3/16"	4 1/16"	W+8 3/8"	H+8 1/4"
		W S-265	W S-265	T S-259	4 3/16"	4 3/16"	3 15/16"	W+8 3/8"	H+8 1/8"
		W S-265	W S-265	W S-264	4 3/16"	4 3/16"	4 1/8"	W+8 3/8"	H+8 5/16"
		W S-265	W S-265	Z S-247	4 3/16"	4 3/16"	4 1/2"	W+8 3/8"	H+8 11/16"
3 3/8"		SS S-1454	SS S-1454	FF S-450	3 7/16"	3 7/16"	3 3/4"	W+6 7/8"	H+7 3/16"
		SS S-1454	SS S-1454	Z S-247	3 7/16"	3 7/16"	4 1/2"	W+6 7/8"	H+7 15/16"
3 1/2"		Z S-246	Z S-246	Z S-247	3 15/16"	3 15/16"	4 1/2"	W+7 7/8"	H+8 7/16"
3 5/8"		F S-453	F S-453	C S-006	1 5/8"	1 5/8"	3 9/16"	W+3 1/4"	H+5 3/16"
		F S-453	F S-453	Z S-247	1 5/8"	1 5/8"	4 1/2"	W+3 1/4"	H+6 1/8"
4"		C S-005	C S-005	A S-951	2 7/16"	2 7/16"	4 13/16"	W+4 7/8"	H+7 1/4"
		C S-005	C S-005	C S-006	2 7/16"	2 7/16"	3 9/16"	W+4 7/8"	H+6"
		C S-005	C S-005	R S-008	2 7/16"	2 7/16"	4 3/4"	W+4 7/8"	H+7 3/16"
		C S-005	CM S-023	A S-951	2 7/16"	3 7/16"	4 13/16"	W+6 7/8"	H+7 1/4"
		C S-005	CM S-023	C S-006	2 7/16"	3 7/16"	3 9/16"	W+6 7/8"	H+6"
		CM S-023	C S-005	A S-951	3 7/16"	2 7/16"	4 13/16"	W+4 7/8"	H+8 1/4"
		CM S-023	C S-005	C S-006	3 7/16"	2 7/16"	3 9/16"	W+4 7/8"	H+7"

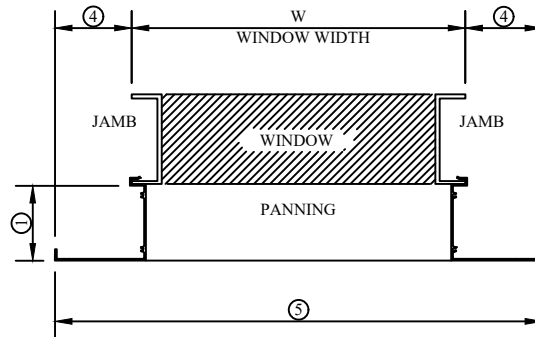
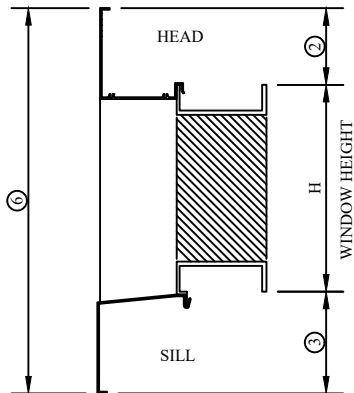
Straight Leg Calculations



RETURN LEG (CANNOT BE EXTENDED OR TRIMMED) SEE DIE DRAWINGS FOR LEG DIMENSION
STRAIGHT LEG (CAN BE FIELD EXTENDED, WITH EXPANDER, OR FIELD TRIMMED)

PROJECTION ①	RETURN LEG	HEAD	JAMB	SILL	NET GAINS OVER WINDOW SIZE			PANNING TIP-TO-TIP	
		DIE NAME DIE NO.	DIE NAME DIE NO.	DIE NAME DIE NO.	HEAD ②	JAMB ④	SILL ③	WIDTH ⑤	HEIGHT ⑥
4"		CM S-023	CM S-023	A S-951	3 7/16"	3 7/16"	4 13/16"	W+6 7/8"	H+8 1/4"
		CM S-023	CM S-023	C S-006	3 7/16"	3 7/16"	3 9/16"	W+6 7/8"	H+7"
		CM S-023	CM S-023	E S-041	3 7/16"	3 7/16"	3"	W+6 7/8"	H+6 7/16"
		M S-478	M S-478	A S-951	3 11/16"	3 11/16"	4 13/16"	W+7 3/8"	H+8 1/2"
		M S-478	M S-478	C S-006	3 11/16"	3 11/16"	3 9/16"	W+7 3/8"	H+7 1/4"
		M S-478	M S-478	CC S-476	3 11/16"	3 11/16"	3 1/4"	W+7 3/8"	H+6 15/16"
		M S-478	M S-478	FF S-450	3 11/16"	3 11/16"	3 3/4"	W+7 3/8"	H+7 7/16"
		MB S-2469	MB S-2469	A S-951	3 11/16"	3 11/16"	4 13/16"	W+7 3/8"	H+8 1/2"
		MB S-2469	MB S-2469	M2 S-925	3 11/16"	3 11/16"	5 15/16"	W+7 3/8"	H+9 5/8"
		U S-051	U S-051	A S-951	3 3/4"	3 3/4"	4 13/16"	W+7 1/2"	H+8 9/16"
		U S-051	U S-051	C S-006	3 3/4"	3 3/4"	3 9/16"	W+7 1/2"	H+7 5/16"
4 7/8"		NN S-1381	NN S-1381	FF S-450	2 3/8"	2 3/8"	3 3/4"	W+4 3/4"	H+6 1/8"
4 7/8"		NN S-1381	NN S-1381	R S-008	2 3/8"	2 3/8"	4 3/4"	W+4 3/4"	H+7 1/8"
		NN S-1381	NN S-1381	T S-259	2 3/8"	2 3/8"	3 15/16"	W+4 3/4"	H+6 5/16"
5 1/2"		BB S-449	BB S-449	R S-008	3 7/16"	3 7/16"	4 3/4"	W+6 7/8"	H+8 3/16"
		R S-007	R S-007	R S-008	3 7/16"	3 7/16"	4 3/4"	W+6 7/8"	H+8 3/16"

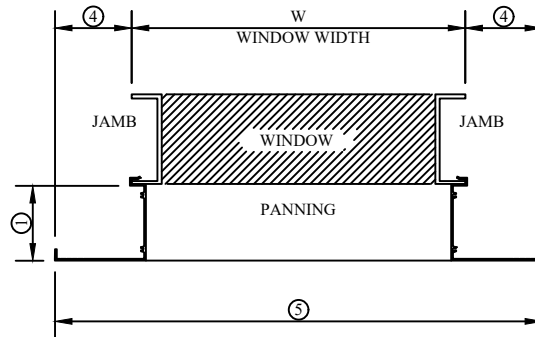
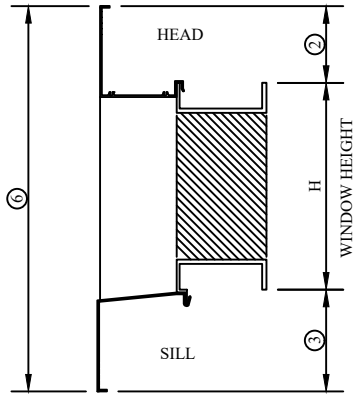
Return Leg Calculations



RETURN LEG (CANNOT BE EXTENDED OR TRIMMED) SEE DIE DRAWINGS FOR LEG DIMENSION
STRAIGHT LEG (CAN BE FIELD EXTENDED, WITH EXPANDER, OR FIELD TRIMMED)

PROJECTION ①	RETURN LEG	HEAD	JAMB	SILL	NET GAINS OVER WINDOW SIZE			PANNING TIP-TO-TIP	
		DIE NAME DIE NO.	DIE NAME DIE NO.	DIE NAME DIE NO.	HEAD ②	JAMB ④	SILL ③	WIDTH ⑤	HEIGHT ⑥
3/4"	RETURN LEG SILL	B S-001	B S-001	IR S-1356	1 1/2"	1 1/2"	3/4"	W+3"	H+2 1/4"
1 1/16"	RETURN LEG HD & JB	VR S-1608	VR S-1608	CC S-476	1 7/16"	1 7/16"	3 3/16"	W+2 7/8"	H+4 5/8"
	RETURN LEG HD & JB	VR S-1608	VR S-1608	EE S-448	1 7/16"	1 7/16"	3 3/16"	W+2 7/8"	H+4 5/8"
	RETURN LEG HD & JB	VR S-1608	VR S-1608	T S-259	1 7/16"	1 7/16"	3 15/16"	W+2 7/8"	H+5 3/8"
1 3/4"	RETURN LEG ALL	EC S-2048	EC S-2048	EC S-2049	1 15/16"	1 15/16"	2 3/4"	W+3 7/8"	H+4 11/16"
	RETURN LEG HD & JB	IR S-1355	IR S-1355	D S-004	3/16"	3/16"	3 3/8"	W+3/8"	H+3 9/16"
	RETURN LEG ALL	IR S-1355	IR S-1355	IR S-1356	3/16"	3/16"	3/4"	W+3/8"	H+15/16"
	RETURN LEG HD & JB	IR S-1355	IR S-1355	L S-260	3/16"	3/16"	4 3/4"	W+3/8"	H+4 15/16"
1 7/8"	RETURN LEG HD & JB	JR S-076	JR S-076	C S-006	2 1/2"	2 1/2"	3 9/16"	W+5"	H+6 1/16"
	RETURN LEG HD & JB	JR S-076	JR S-076	D S-004	2 1/2"	2 1/2"	3 3/8"	W+5"	H+5 7/8"
	RETURN LEG HD & JB	JR S-076	JR S-076	DM S-1446	2 1/2"	2 1/2"	4 3/8"	W+5"	H+6 7/8"
	RETURN LEG HD & JB	JR S-076	JR S-076	L S-260	2 1/2"	2 1/2"	4 3/4"	W+5"	H+7 1/4"
	RETURN LEG ALL	JR S-076	JR S-076	NR S-092	2 1/2"	2 1/2"	2 1/2"	W+5"	H+5"

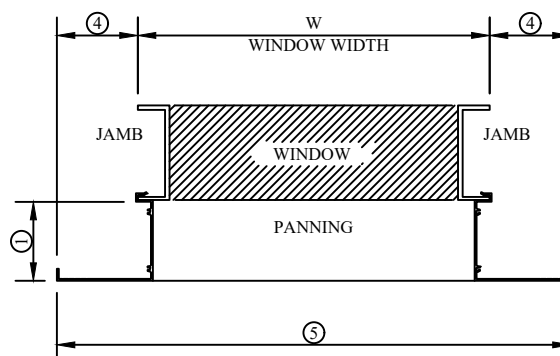
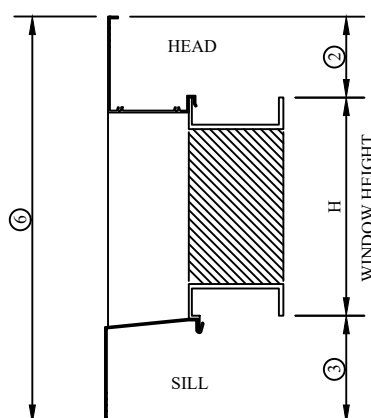
Return Leg Calculations



RETURN LEG (CANNOT BE EXTENDED OR TRIMMED) SEE DIE DRAWINGS FOR LEG DIMENSION
STRAIGHT LEG (CAN BE FIELD EXTENDED, WITH EXPANDER, OR FIELD TRIMMED)

PROJECTION ①	RETURN LEG	HEAD	JAMB	SILL	NET GAINS OVER WINDOW SIZE			PANNING TIP-TO-TIP	
		DIE NAME DIE NO.	DIE NAME DIE NO.	DIE NAME DIE NO.	HEAD ②	JAMB ④	SILL ③	WIDTH ⑤	HEIGHT ⑥
2"	RETURN LEG SILL	DD S-435	DD S-435	CR S-012	1 1/4"	1 1/4"	2 9/16"	W+2 1/2"	H+3 13/16"
	RETURN LEG SILL	DD S-435	DD S-435	MR S-479	1 1/4"	1 1/4"	1 1/16"	W+2 1/2"	H+2 5/16"
	RETURN LEG HD & JB	PR S-099	PR S-099	A S-951	3/4"	3/4"	4 13/16"	W+1 1/2"	H+5 9/16"
	RETURN LEG ALL	PR S-099	PR S-099	CR S-012	3/4"	3/4"	2 9/16"	W+1 1/2"	H+3 5/16"
	RETURN LEG HD & JB	PR S-099	PR S-099	D S-004	3/4"	3/4"	3 3/8"	W+1 1/2"	H+4 1/8"
	RETURN LEG HD & JB	PR S-099	PR S-099	L S-260	3/4"	3/4"	4 3/4"	W+1 1/2"	H+5 1/2"
	RETURN LEG ALL	PR S-099	PR S-099	MR S-479	3/4"	3/4"	1 1/16"	W+1 1/2"	H+1 13/16"
	RETURN LEG HD & JB	PR S-099	PR S-099	T S-259	3/4"	3/4"	3 15/16"	W+1 1/2"	H+4 11/16"
	RETURN LEG HD & JB	PR S-099	PR S-099	Z S-247	3/4"	3/4"	4 1/2"	W+1 1/2"	H+5 1/4"
2 1/8"	RETURN LEG HD & SILL	N S-1635	N S-1635	MR S-479	1 15/16"	1 15/16"	1 1/16"	W+3 7/8"	H+3"
2 3/8"	RETURN LEG JAMBS	DM S-042	JR S-076	D S-004	3 7/16"	2 1/2"	3 3/8"	W+5"	H+6 13/16"
2 5/8"	RETURN LEG HD & JB	A6 S-3045	A6 S-3075	T S-259	1 7/16"	1 7/16"	3 15/16"	W+2 7/8"	H+5 3/8"
3"	RETURN LEG SILL	Y S-580	Y S-580	MR S-479	3 15/16"	3 15/16"	1 1/16"	W+7 7/8"	H+5"

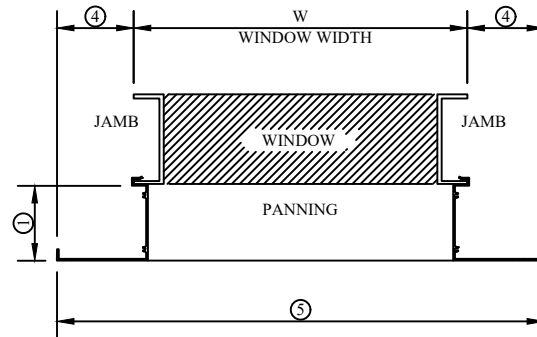
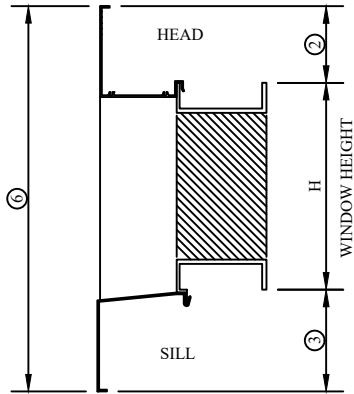
Return Leg Calculations



RETURN LEG (CANNOT BE EXTENDED OR TRIMMED) SEE DIE DRAWINGS FOR LEG DIMENSION
STRAIGHT LEG (CAN BE FIELD EXTENDED, WITH EXPANDER, OR FIELD TRIMMED)

PROJECTION ①	RETURN LEG	HEAD	JAMB	SILL	NET GAINS OVER WINDOW SIZE			PANNING TIP-TO-TIP	
		DIE NAME DIE NO.	DIE NAME DIE NO.	DIE NAME DIE NO.	HEAD ②	JAMB ④	SILL ③	WIDTH ⑤	HEIGHT ⑥
3 1/16"	RETURN LEG SILL	T S-258	T S-258	AR S-1910	3 7/16"	3 7/16"	2 3/4"	W+6 7/8"	H+6 3/16"
	RETURN LEG SILL	T S-258	T S-258	MR S-479	3 7/16"	3 7/16"	1 1/16"	W+6 7/8"	H+4 1/2"
3 1/4"	RETURN LEG ALL	AR S-1911	AR S-1911	AR S-1910	1 15/16"	1 15/16"	2 3/4"	W+3 7/8"	H+4 11/16"
	RETURN LEG HD & JB	AR S-1911	AR S-1911	C S-006	1 15/16"	1 15/16"	3 9/16"	W+3 7/8"	H+5 1/2"
	RETURN LEG ALL	AR S-1911	AR S-1911	NR S-092	1 15/16"	1 15/16"	2 1/2"	W+3 7/8"	H+4 7/16"
	RETURN LEG ALL	AR S-1911	AR S-1911	SR S-1354	1 15/16"	1 15/16"	3/4"	W+3 7/8"	H+2 11/16"
	RETURN LEG HD & JB	AR S-1911	AR S-1911	Z S-247	1 15/16"	1 15/16"	4 1/2"	W+3 7/8"	H+6 7/16"
3 3/4"	RETURN LEG HD & JB	SR S-1353	SR S-1353	R S-008	3/16"	3/16"	4 3/4"	W+3/8"	H+4 15/16"
	RETURN LEG ALL	SR S-1353	SR S-1353	SR S-1354	3/16"	3/16"	3/4"	W+3/8"	H+15/16"
3 15/16"	RETURN LEG ALL	A4 S-2915	A4 S-2915	MR S-479	1 9/16"	1 9/16"	1 1/16"	W+3 1/8"	H+2 5/8"
4"	RETURN LEG SILL	C S-005	C S-005	CR S-012	2 7/16"	2 7/16"	2 9/16"	W+4 7/8"	H+5"
	RETURN LEG HD & JB	CR S-011	CR S-011	C S-006	1 5/16"	1 5/16"	3 9/16"	W+2 5/8"	H+4 7/8"

Return Leg Calculations



RETURN LEG (CANNOT BE EXTENDED OR TRIMMED) SEE DIE DRAWINGS FOR LEG DIMENSION
STRAIGHT LEG (CAN BE FIELD EXTENDED, WITH EXPANDER, OR FIELD TRIMMED)

PROJECTION ①	RETURN LEG	HEAD	JAMB	SILL	NET GAINS OVER WINDOW SIZE			PANNING TIP-TO-TIP	
		DIE NAME DIE NO.	DIE NAME DIE NO.	DIE NAME DIE NO.	HEAD ②	JAMB ④	SILL ③	WIDTH ⑤	HEIGHT ⑥
4"	RETURN LEG ALL	CR S-011	CR S-011	CR S-012	1 5/16"	1 5/16"	2 9/16"	W+2 5/8"	H+3 7/8"
	RETURN LEG ALL	CR S-011	CR S-011	MR S-479	1 5/16"	1 5/16"	1 1/16"	W+2 5/8"	H+2 3/8"
	RETURN LEG SILL	M S-478	M S-478	CR S-012	3 11/16"	3 11/16"	2 9/16"	W+7 3/8"	H+6 1/4"
	RETURN LEG HD & JB	MR S-478	MR S-478	C S-006	1 5/8"	1 5/8"	3 9/16"	W+3 1/4"	H+5 3/16"
	RETURN LEG ALL	MR S-478	MR S-478	CR S-012	1 5/8"	1 5/8"	2 9/16"	W+3 1/4"	H+4 3/16"
	RETURN LEG ALL	MR S-478	MR S-478	MR S-479	1 5/8"	1 5/8"	1 1/16"	W+3 1/4"	H+2 11/16"
	RETURN LEG SILL	U S-051	U S-051	CR S-012	3 3/4"	3 3/4"	2 9/16"	W+7 1/2"	H+6 5/16"
4 3/4"	RETURN LEG HD & JB	NR S-093	NR S-093	FF S-450	2 7/16"	2 7/16"	3 3/4"	W+4 7/8"	H+6 3/16"
	RETURN LEG ALL	NR S-093	NR S-093	NR S-092	2 7/16"	2 7/16"	2 1/2"	W+4 7/8"	H+4 15/16"